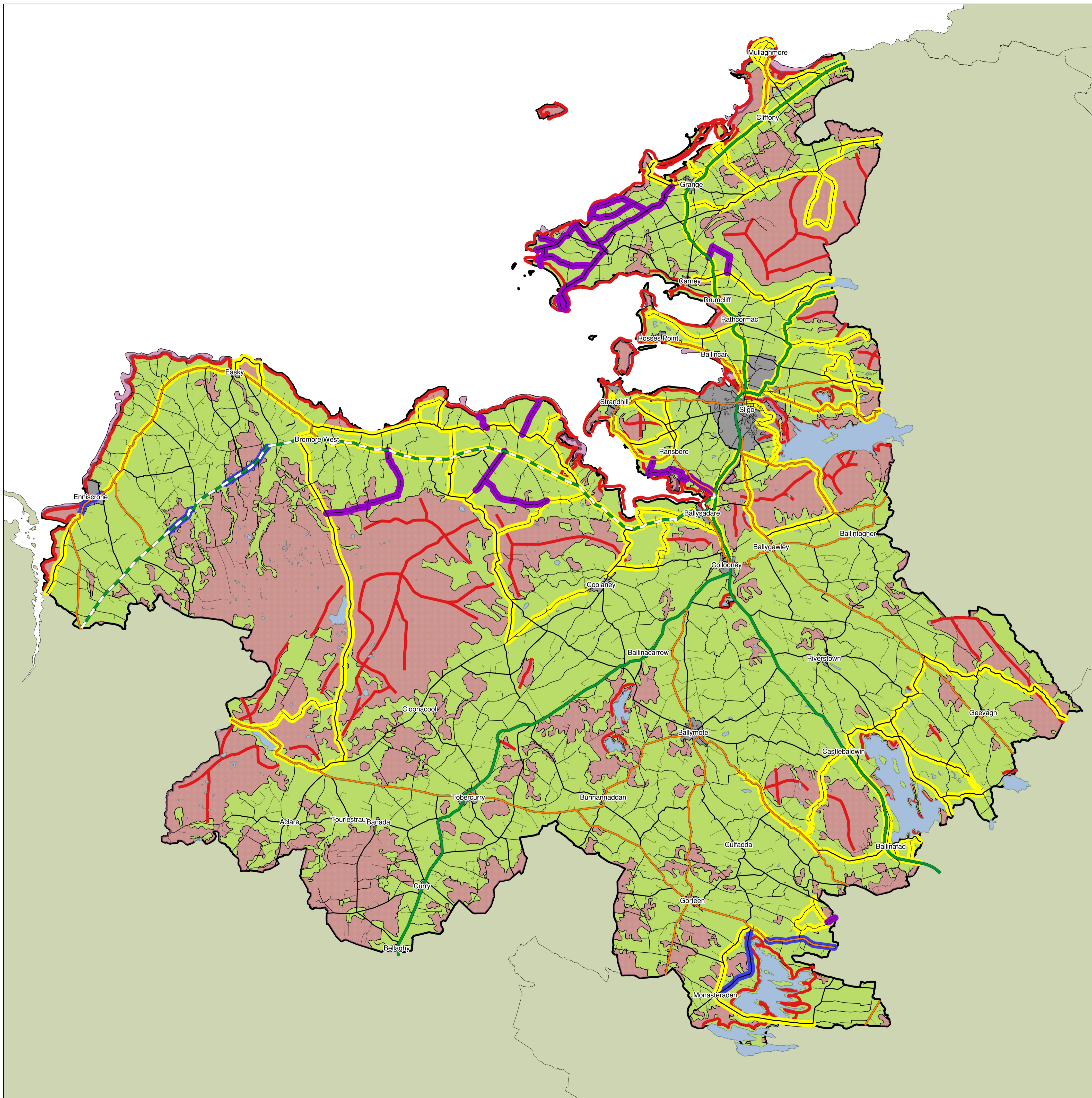

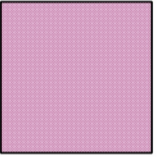






Draft for consultation
21 September 2016

Landscape Characterisation Map



-  Normal Rural Landscape
-  Sensitive Rural Landscape
-  Visually Vulnerable Areas
-  Scenic Route
-  Proposed scenic route
-  Scenic route proposed for deletion

Note 1 : The environs of archaeological and historical sites are considered Visually Vulnerable Areas

Note 2: Scenic routes are public roads from which the views and prospects to Visually Vulnerable features are to be preserved