

11 May 2017

HABITATS DIRECTIVE ASSESSMENT

Natura Impact Report for the proposed amendments
to the Draft Sligo County Development Plan 2017-2023

In accordance with the requirements of Article 6(3) of the EU Habitats Directive

Contents

Section 1 Introduction

- 1.1 Consultation on the Draft CDP
- 1.2 Current stage in the Habitats Directive Assessment
- 1.3 Assessment of Proposed Amendments
- 1.4 Background
- 1.5 Legislative Context
- 1.6 Stages of Appropriate Assessment

Section 2 How this Report Was Prepared

- 2.1 Working Methods
- 2.2 Data Sources
- 2.3 Consultation

Section 3 Stage 1 – Screening for Appropriate Assessment

- 3.1 Description of the proposed amendments to the draft Plan
- 3.2 Features of the proposed amendments that would impact on Natura 2000 sites
- 3.3 Brief description and identification of Natura 2000 sites to be screened
- 3.4 Conservation Objectives
- 3.5 Documented threats to SACs and SPAs
- 3.6 Is the Plan Necessary to the Management of Natura 2000 sites?
- 3.7 Likely Changes to Natura 2000 sites
- 3.8 Screening of Proposed Amendments
- 3.9 Screening Conclusion

Section 4 Stage 2 – Natura Impact Report

- 4.1 Overview
- 4.2 Likely Significant Effects of the proposed amendments on the Conservation Objectives of Natura 2000 sites
- 4.3 Consultation with Environmental Authorities
- 4.4 Conclusion

Section 5 Relevant Documents and References

Appendix 1 AA Screening of Proposed Amendments to Volume 1 of the Draft Plan

Appendix 2 AA Screening of Proposed Amendments to Volume 2 of the Draft Plan

List of Figures

Figure 3.1: Natura 2000 Sites within Co. Sligo and within 15km of the County Boundary.

List of Tables

Table 3.1a: SACs in County Sligo

Table 3.2b: SACs within 15km of the boundary of County Sligo

Table 3.2a: SPAs in County Sligo

Table 3.2b: SPAs within 15km of the boundary of County Sligo

Table 3.3: Summary of Screening Assessment completed for Natura 2000 sites within and adjacent to Co. Sligo

Table 4.1 The Unshin River SAC and its features of interest, conservation objectives and threats to site integrity

Table 4.2 The proposed amendment to the Draft Plan and a summary of the likely significant effects of the amendment on the Unshin River SAC.

Section 1 Introduction

1.1 Consultation on the Draft CDP

The Draft Sligo County Development Plan 2017-2023 and associated assessments were placed on public display from 21 September to 30 November 2016. The Second Chief Executive's Report, containing recommendations in relation to the 225 submissions received and some supplementary recommendations, was considered by the elected members of Sligo County Council at two meetings held on 27 March and 8 May 2017.

Following consideration of the Second Chief Executive's Report, the members, by resolution, proposed amendments to the Draft Plan. If adopted, most proposed amendments would be material alterations of the original draft.

Amendments were proposed to Volume 1 (text, policies, objectives) and Volume 2 (text, objectives, zoning) of the Draft Plan, Environmental Report, Strategic Flood Risk Assessment, as well as to the Record of Protected Structures (for the County and for Sligo and Environs area) and to the associated *Proposed Additions and Deletions* document.

There are also several corrections to be made to Volume 1, Volume 2 and the RPS, as recommended by the Chief Executive.

1.2. Current stage in the Habitats Directive Assessment

Habitats Directive Assessment (HDA) has been carried out in parallel with the preparation of the Draft Plan throughout 2015-2016. The Habitats Directive Assessment (HDA), published together with the Draft Plan, contains the findings of the assessment on the likely significant effects on Natura 2000 sites of the implementation of the Draft Plan.

The current stage of the HDA process consists of assessing the likelihood of significant effects on Natura 200 sites as a result of introducing the proposed amendments.

Under the provisions of Article 6 of the Habitats Directive (92/43/EEC) the Draft Plan underwent a Habitats Directive Assessment (HDA) which determined that a Stage 2 Appropriate Assessment was not required at that stage of the plan making process. The Habitats Directive Assessment of the proposed amendments is presented in this document.

The Mini-Plans included in the Draft Plan were subject to a Strategic Flood Risk Assessment (SFRA). An Addendum to the SFRA, included as Section 4 of the SEA addendum, contains the flood risk assessment of the proposed amendments to Mini-Plans.

This document should be read in conjunction with the original Habitats Directive Assessment, SEA and SFRA of the Draft Plan.

1.3. Assessment of proposed amendments

Sections 3 and 4 of this Natura Impact Report present the assessment of any likely significant impact of the proposed amendments on Natura 2000 sites in respect of amendments.

The proposed changes to the RPS and to the *Proposed Additions and Deletions* document are not assessed in this Natura Impact Report, because it is considered that there is no direct connection between the listing of a structure for protection and any subsequent likely significant effects in Natura 2000 sites.

In Sections 3 and 4 of this Natura Impact Report, the proposed amendments to Volume 1 and Volume 2 of the Draft CDP are assessed for their potential to have a likely, significant effect on Natura 2000 sites arising from their adoption and implementation.

1.4 Background

Sligo County Council is in the process of preparing the draft Sligo County Development Plan 2017-2023, which will set out planning strategy and other policy for County Sligo for the next six years.

In accordance with the requirements of the EU Habitats Directive (43/92/EEC) and EU Birds Directive (79/409/EEC), the impacts of the policies and objectives of all statutory land use plans on certain sites that are designated for the protection of nature (Natura 2000 sites), must be assessed as an integral part of the process of drafting the plan. This is to determine whether or not the implementation of plan policies could have negative consequences for the habitats or plant and animal species for which these sites are designated. This assessment process is called Habitats Directive Assessment (HDA) and must be carried out at all stages of the plan making process.

1.5 Legislative Context

Habitats Directive Assessment is an iterative process which runs parallel to and informs the plan making process. It involves analysis and review of draft policies as they emerge during each stage of plan making, to ensure that their implementation will not impact on sites designated for nature conservation, nor on the habitats or species for which they are designated. Within this process, regard is had to the potential for policies to contribute to impacts which on their own may be acceptable, but which could be significant when considered in combination with the impacts arising from the implementation of other plans or policies.

An important aspect of the Development Plan is how the Plan may impact on European Sites designated for nature conservation, i.e. Special Areas of Conservation (SAC) and Special Protection Areas (SPA). Council Directive 92/43/EEC on the Conservation of Natural Habitats and of Wild Fauna and Flora, better known as “The Habitats Directive”, provides legal protection for habitats and species of European importance. Articles 3 to 9 provide the legislative means to protect habitats and species of Community interest through the establishment and conservation of an EU-wide network of sites known as Natura 2000. These are SACs and SPA’s designated under the Habitats Directive and Birds Directive (Conservation of Wild Birds Directive (79/409/ECC)).

Articles 6(3) and 6(4) of the Habitats Directive set out the decision making tests for plans and projects likely to affect Natura 2000 sites (Annex 1.1). Article 6(3) establishes the requirement for Appropriate Assessment (AA):

Article 6(3): “Any plan or project not directly connected with or necessary to the management of the [Natura 2000] site but likely to have a significant effect thereon, either individually or in combination with other plans or projects, shall be subjected to an appropriate assessment of its implications for the site in view of the site’s conservation objectives. In light of the conclusions of the assessment of the implications for the site and subject to the provisions of paragraph 4, the competent national authorities shall agree to the plan or project only after having ascertained that it will not adversely affect the integrity of the site concerned and, if appropriate, after having obtained the opinion of the general public.”

Article 6(4): “If, in spite of a negative assessment of the implications for the site and in the absence of alternative solutions, a plan or project must nevertheless be carried out for imperative reasons of overriding public interest, including those of a social or economic nature, Member States shall take all compensatory measures necessary to ensure that the overall coherence of the Natura 2000 is protected. It shall inform the Commission of the compensatory measures adopted. Where the site concerned hosts a priority natural habitat type and/or a priority species the only considerations which may be raised are those relating to human health or public safety, to the beneficial consequences of primary importance for the environment or, further to an opinion from the Commission, to other imperative reasons of overriding public interest.”

The process may result in the development of new policy areas and/or the modification or removal of certain policies to be presented in the final plan. The results of this analysis and review are presented in Habitats Directive Reports which are produced for each iteration of the plan and its policies. At the end of the plan making process, a Habitats Directive Conclusion Statement will be produced which will contain a summary of how ecological considerations in relation to Natura 2000 sites have been integrated into the plan. The final Habitats Directive Assessment and a declaration in relation to the potential for the plan to affect the integrity of Natura 2000 sites within its potential impact zone will also be produced at that time.

This document provides a record of the second phase of the Habitats Directive Assessment (HDA) process for the proposed amendments to the Sligo County Development Plan 2017 – 2023 (SCDP). All Natura 2000 sites within the potential impact zone of the plan have been screened to determine whether there is potential for significant impacts on qualifying features of Natura 2000 sites to arise out of the proposed amendments to the Plan.

1.6 Stages of Appropriate Assessment

The European Union has provided guidance as to how to complete a Habitats Directive Assessment for land use plans which identifies four main stages in the process as follows:

Stage One: Screening

The process which identifies what might be likely impacts arising from a plan on a Natura 2000 site, either alone or in combination with other projects or plans, and considers whether these impacts are likely to be significant.

Stage Two: Appropriate assessment

Where the possibility of significant impacts has not been discounted by the screening process, a more detailed assessment is required. This is called an appropriate assessment and involves the consideration of the impact of the plan on the integrity of the Natura 2000 site, either alone or in combination with other projects or plans, having regard to the site's structure and function and its conservation objectives. Additionally, where there are adverse impacts, it involves an assessment of the potential mitigation of those impacts.

Stage Three: Assessment of alternative solutions

Should the conclusion of the appropriate assessment be that there are likely to be impacts which will affect the overall integrity of the Natura 2000 site, then it is required to examine alternative ways of achieving the objectives of the project or plan that avoids such adverse impacts. Stage three of a Habitats Directive Assessment involves the assessment of alternative solutions.

Stage Four: Assessment where no alternative solutions exist and where adverse impacts remain

Should it be found that there are no viable alternative solutions to avoid adverse impacts on the Natura 2000 site, and should it be agreed that the project/plan can proceed despite such impacts (which can only be for overriding reasons of public interest), then compensatory measures must be put in place in advance of the implementation of the plan/project. The fourth stage of the habitats directive assessment process involves the assessment of the proposed compensatory measures.

The assessment may stop at any of the above stages depending on the outcomes of the stage.

This document represents the second phase of the Habitats Directive Assessment process for the Draft Sligo County Development Plan 2017-2023. All Natura 2000 sites within the County, and within 15km of the County, have been screened to determine whether there is potential for the proposed amendments to the plan to give rise to significant impacts on any Natura 2000 site, or to give rise to adverse impacts on any Natura 2000 site having regard to their conservation objectives.

Section 2 How this Report Was Prepared

2.1 Working Methods

This Natura Impact Report has been prepared in accordance with the following guidance:

- Appropriate Assessment of Plans and Projects in Ireland. Guidance for Planning Authorities. Department of the Environment, Heritage and Local Government, 2009 (amended in 2010).
- Assessment of plans and projects significantly affecting Natura 2000 sites: Methodological guidance on the provisions of Article 6(3) and (4) of the Habitats Directive 92/43/EEC, European Commission Environment DG, 2000.
- Managing Natura 2000 sites: The Provisions of Article 6 of the Habitats Directive 92/43/EEC: European Commission, 2000

The draft Sligo County Development Plan 2017-2023 was prepared by the Development Plan Unit of Sligo County Council.

The Habitats Directive Assessment of the proposed amendments to the draft plan was undertaken and the findings of the assessment are presented in this Natura Impact Report.

As the draft CDP progresses through the plan making process, the Habitats Directive Assessment process continues in tandem and will inform the decision making process in terms of any likely significant impacts arising from the implementation of the Plan on Natura 2000 sites.

2.2 Data Sources

The Habitats Directive Assessment of potential impacts on the integrity of Natura 2000 sites in this Natura Impact Report is based on a desktop review of information relating to these sites and the habitats and species that they support. References and data used are cited in the back of this report.

2.3 Consultation

This report, will be placed on public display with the proposed amendments to the Draft Sligo County Development Plan 2017-2023. The addendum to the SEA Environmental Report is available for consideration by the general public, and will be referred to all statutory consultees for consideration during the public consultation phase. Submissions received will be taken into consideration in the drafting of the final plan and accompanying Habitats Directive Assessment.

Section 3 Stage 1 - Screening for Appropriate Assessment

3.1 Description of the Proposed Amendments to the Draft Plan

The proposed amendments to the Draft County Sligo Development Plan are outlined in **Appendix 1 & 2** of this document.

3.2 Features of the Proposed Amendments that could impact on Natura 2000 sites

Impacts arising from the implementation of objectives of the draft plan which could cause significant impacts on the integrity and conservation objectives of Natura 2000 sites include activities which give rise to:

- direct impacts on habitats listed on Annex I of the Habitats Directive and for which the site is designated;
- reduction in the area of any habitats within the site;
- direct or indirect damage to the physical quality of the environment (e.g. water quality) in the Natura 2000 site;
- serious or ongoing disturbance to species or habitats for which the Natura 2000 site is selected (e.g. increased noise, illumination, human activity);
- direct or indirect damage to the size, characteristics or reproductive ability of populations of species for which the Natura 2000 site is designated;
- activities which interfere with mitigation measures put in place for other plans or projects.

The proposed amendments to the draft plan were reviewed as part of the screening process. Consideration was given to direct and indirect impacts which may arise from activities which could be encouraged by objectives proposed to be amended in the draft plan. Such activities could include new residential, commercial, infrastructural, recreational or other development which may give rise to direct impacts on habitats or species (loss of habitat, disturbance to species); as well as activities which could have indirect impacts (e.g. activities which could affect water quality or hydrology which could in turn affect the status/health of populations of water dependant habitats or species).

Section 3.3 Brief description and identification of Natura 2000 sites to be screened

The draft County Development Plan covers County Sligo including the administrative area of Sligo City. The County hosts a diverse range of ecosystem types, including marine, freshwater and terrestrial ecosystems, reflecting its geographical position on the northwest coast of the country, its geology which is dominated by limestone and has been influenced by the people who have settled here.

A total of fifty Natura 2000 sites were identified during the screening of the Draft Sligo County Development Plan (Draft SCDP) that could potentially be impacted by the objectives and policies contained therein. The county supports twenty sites which have been designated, or proposed for designation as Special Areas of Conservations (SACs) under the Habitats Directive, and a further ten sites which have been designated as Special Protection Areas (SPAs) under the Birds Directive. This report focuses on these sites and on sites occurring in adjacent counties within 15km of the Co. Sligo border. A total of sixteen SAC's, and four SPA's located within 15km of Co. Sligo have been identified for assessment in this report.

A map indicating the locations of the Natura 2000 sites subject to Habitats Directive Assessment is given in **Figure 3.1**.

Tables 3.1 a & b (SACs) and **Table 3.2 a & b (SPAs)** list the Natura 2000 sites that are a) within County Sligo and b) within 15 km of the county boundary and which have been assessed in this report. The qualifying features, conservation objectives and threats to site integrity for each site have been obtained through a review of the site synopses available from the NPWS website.

The potential for Natura 2000 sites that are >15km from the plan boundary area to be affected by policies set out in the draft plan was also considered. This could include sites which are hydrologically connected to watercourses or water bodies within the plan boundary area. However, no such sites were identified.

3.4 Conservation Objectives

The National Parks and Wildlife Service (NPWS) is in the process of preparing Conservation Management Plans for all Natura 2000 sites in the country. These plans will have a range of conservation objectives which relate to the protection and enhancement of habitats and populations of species for which these sites are designated. In relation to appropriate assessment, regard must be had to potential impacts arising from the plan on the conservation objectives for all Natura 2000 sites within the impact zone of the Draft Plan.

A Natura 2000 site's conservation objectives are defined by NPWS and are, "intended to ensure that the relevant Annex I habitats and Annex II species present on a site are maintained in a favourable condition" (DEHLG, 2010). The DEHLG guidelines state that, "The Conservation Objectives derive from the qualifying interests, the Natura 2000 standard data form, and the management plan for the site, with summary information also available in the site synopsis." Whilst the Natura 2000 standard data forms and site synopses do present details of the qualifying features of Natura 2000 sites, and list the generic threats to those features, they do not define the conservation objectives of the site.

For the purposes of this assessment, information on the conservation objectives for the sites has been gained from existing information available on www.npws.ie and NPWS generic Conservation Objectives for Natura 2000 Sites where no management plan is yet available.

For Special Areas of Conservation (SACs), generic Conservation Objectives are as follows:

- To maintain Annex I habitats and Annex II species for which the cSAC has been selected at favourable conservation status;
- To maintain the extent of species richness and biodiversity of the entire site; and
- To establish effective liaison and co-operation with landowners, legal users and relevant authorities.

For Special Protection Area (SPAs), a single generic Conservation Objective is provided as follows:

- To maintain the bird species of special conservation interest for which the SPA has listed, at favourable conservation status.

Favourable conservation status of a species can be described as being achieved when: “population data on the species concerned indicate that it is maintaining itself, and the natural range of the species is neither being reduced or likely to be reduced for the foreseeable future, and there is, and will probably continue to be, a sufficiently large habitat to maintain its populations on a long-term basis.”

Favourable conservation status of a habitat can be described as being achieved when: ‘its natural range, and area it covers within that range, is stable or increasing, and the ecological factors that are necessary for its long-term maintenance exist and are likely to continue to exist for the foreseeable future, and the conservation status of its typical species is favourable’

Where site specific conservation objectives exist, these have been included in **Tables 3.1 a & b and Tables 3.2 a & b**. Where no conservation objectives are yet available, NPWS have provided generic conservation objectives for Natura 2000 Sites.

3.5 Documented Threats to SACs and SPAs

Documented threats to Habitats Directive Annex I habitats and Annex II species in Ireland are presented in the ‘backing documents’ and ‘Natura 2000 Data Form’ for each habitat and species which are available from NPWS in www.npws.ie. Not all of these threats will apply to all cSACs and SPAs in which these habitats and species are present; however gathering information on the documented perceived threats to the qualifying features of the sites (and therefore to the conservation objectives of the sites and the integrity of the sites) is an important prerequisite for assessing what are the ‘likely significant effects’ on the sites resulting from the Plan. Threats include:

- Reduction in Habitat Area
- Disturbance to Key Species
- Habitats or Species Fragmentation
- Reduction in Species Density
- Changes in Key Indicators of Conservation Value (Water Quality etc.)

It is important to realise that many of these threats do not necessarily represent activities that occur within the boundary of the Natura 2000 site. This applies in particular to aquatic and marine features and systems which can be affected by impact sources that occur a large distance from the site.

Threats to site integrity for the relevant SACs and SPAs have been identified by NPWS and are provided in **Tables 3.1 a & b and Tables 3.2 a & b** below.

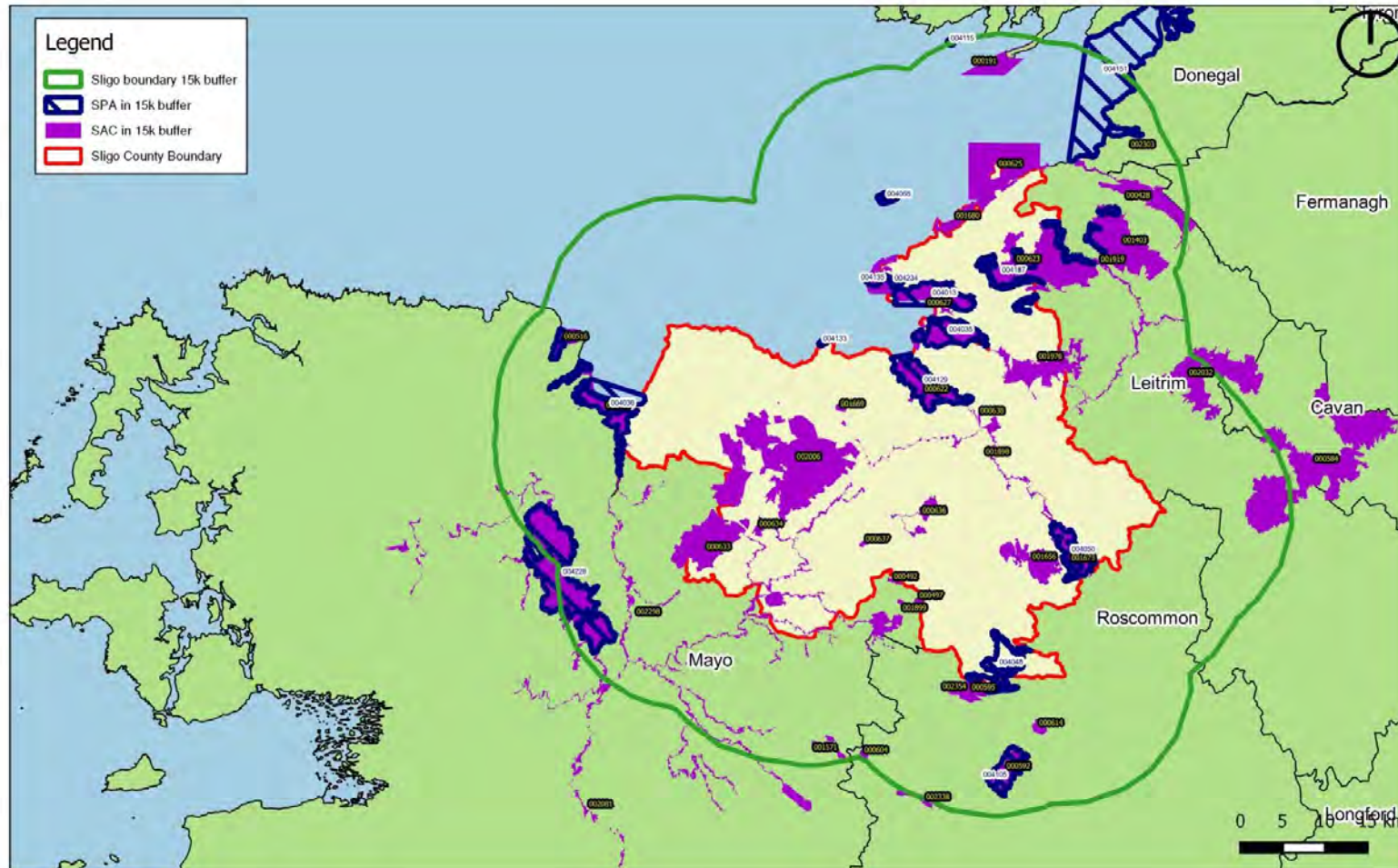


Figure 3.1: Natura 2000 Sites within Co. Sligo and within 15km of the County Boundary.

Table 3.1a: SACs in County Sligo

Site Name (Site Code)	Annex I Habitats	Annex II Species	Conservation Objectives	Threats to Site Integrity
Ballysadare Bay (000622)	1130 Estuaries 1140 Mudflats and sandflats not covered by seawater at low tide 2110 Embryonic shifting dunes 2120 Shifting dunes along the shoreline with <i>Ammophila arenaria</i> (white dunes) 2130 Fixed coastal dunes with herbaceous vegetation (grey dunes) 2190 Humid dune slacks	<i>Vertigo angustior</i> , Common Seals	Generic Conservation Objectives as outlined in Section 4.2 apply	Decrease in water quality/Increased pollution Development of marinas and ports Disturbance to marine mammals Dumping at sea Direct loss of habitat to development Recreational/amenity use Agricultural improvements/Reclamation Drainage/Changes in local hydrology including water abstraction Erosion (natural and anthropogenic) Agricultural abandonment Overgrazing/undergrazing Bracken and scrub encroachment Tourism related development Introduction of alien invasive species Illegal Dumping Burning Quarrying/removal of sand Aquaculture
Ben Bulbin, Gleniff and Glenade Complex (000623)	4030 European dry heaths 4060 Alpine and Boreal heaths 8210 Calcareous rocky slopes with chasmophytic vegetation 8120 Calcareous and calcshist screes of the montane to alpine levels (<i>Thlaspietea rotundifolii</i>) 5130 <i>Juniperus communis</i> formations on heaths or calcareous grasslands 7220 Petrifying springs with tufa formation (<i>Cratoneurion</i>) 3260 Water courses of plain to montane levels with the <i>Ranunculum fluitantis</i> and <i>Callitriche-Batrachion</i> vegetation	<i>Vertigo geyeri</i> Otter	Generic Conservation Objectives as outlined in Section 4.2 apply	Changes in local hydrology including drainage Peat Extraction Overgrazing Forestry Burning Direct loss of habitat to development Arterial drainage/water abstraction/lowering of the regional water table Agricultural reclamation Introduction of alien invasive species Illegal Dumping Burning

Natura Impact Report for the Proposed Amendments to Draft Sligo CDP 2017-2023
for public consultation – May 2017

Site Name (Site Code)	Annex I Habitats	Annex II Species	Conservation Objectives	Threats to Site Integrity
Bricklieve Mountains and Keishcorran (001656)	8120 Calcareous and calcshist screes of the montane to alpine levels (<i>Thlaspietea rotundifolii</i>) 6510 Lowland hay meadows (<i>Alopecurus pratensis</i> , <i>Sanguisorba officinalis</i>) 6210 Semi-natural dry grasslands and scrubland facies on calcareous substrates (<i>Festuco Brometalia</i>) (*important orchid sites)	White-clawed Crayfish <i>Euphydrys aurinia</i>	To maintain the Annex I habitats for which the cSAC has been selected at favourable conservation status: Semi-natural dry grasslands and scrubland facies on calcareous substrates (<i>Festuco Brometalia</i>); Lowland hay meadows (<i>Alopecuruspratensis</i> , <i>Sanguisorba officinalis</i>); Calcareous and calcshist screes of the montaneto alpine levels (<i>Thlaspietea rotundifolii</i>). To maintain the Annex II species for which the cSAC has been selected at favourable conservation status: <i>Euphydrys aurinia</i> .	Agricultural improvements/Reclamation Agricultural abandonment Overgrazing/undergrazing Direct loss of habitat to development Quarrying Bracken and scrub encroachment Introduction of alien invasive species Illegal Dumping Peat Extraction Forestry Burning
Bunduff Lough and Machair/Trawalua/Mullaghmore (000625)	7230 Alkaline fens 2120 Shifting dunes along the shoreline with <i>Ammophila arenaria</i> (white dunes) 21A0 Machairs (* in Ireland) 6210 Semi-natural dry grasslands and scrubland facies on calcareous substrates (<i>Festuco Brometalia</i>) (*important orchid sites) 1160 Large shallow inlets and bays 1140 Mudflats and sandflats not covered by seawater at low tide 2130 Fixed coastal dunes with herbaceous vegetation (grey dunes) 1170 Reefs 5130 <i>Juniperus communis</i> formations on heaths or calcareous grasslands	Petalwort <i>Petalophyllum ralfsii</i>	Generic Conservation Objectives as outlined in Section 4.2 apply	Decrease in water quality/Increased pollution Development of marinas and ports Disturbance to marine mammals Dumping at sea Direct loss of habitat to development Recreational/amenity use Agricultural improvements/Reclamation Drainage/Changes in local hydrology including water abstraction Erosion (natural and anthropogenic) Agricultural abandonment Overgrazing/undergrazing Bracken and scrub encroachment Tourism related development Introduction of alien invasive species Illegal Dumping Burning Quarrying/removal of sand Aquaculture

Natura Impact Report for the Proposed Amendments to Draft Sligo CDP 2017-2023
for public consultation – May 2017

Site Name (Site Code)	Annex I Habitats	Annex II Species	Conservation Objectives	Threats to Site Integrity
Cummeen Strand/Drumcliff Bay (Sligo Bay) (000627)	1130 Estuaries 1140 Mudflats and sandflats not covered by seawater at low tide 2110 Embryonic shifting dunes 2120 Shifting dunes along the shoreline with <i>Ammophila arenaria</i> (white dunes) 2130 Fixed coastal dunes with herbaceous vegetation (grey dunes) 7220 Petrifying springs with tufa formation (Cratoneurion) 5130 <i>Juniperus communis</i> formations on heaths or calcareous grasslands	<i>Vertigo angustior</i> Common Seal	Generic Conservation Objectives as outlined in Section 4.2 apply	Decrease in water quality/Increased pollution Development of marinas and ports Disturbance to marine mammals Dumping at sea Direct loss of habitat to development Recreational/amenity use Agricultural improvements/Reclamation Drainage/Changes in local hydrology including water abstraction Erosion (natural and anthropogenic) Agricultural abandonment Overgrazing/undergrazing Bracken and scrub encroachment Tourism related development Introduction of alien invasive species Illegal Dumping Burning Quarrying/removal of sand Aquaculture
Doocastle Turlough (000492)	3180 Turloughs*		To maintain or restore the favourable conservation condition of the Annex I habitat(s) and/or the Annex II species for which the SAC has been selected:	Agricultural improvements/Reclamation Drainage/Changes in local hydrology Water quality/pollution (including groundwater) Agricultural abandonment Overgrazing/Undergrazing Direct loss of habitat to development Bracken and scrub encroachment Impacts to local geology/geomorphology eg quarrying/rock blasting Introduction of alien invasive species Illegal Dumping

Natura Impact Report for the Proposed Amendments to Draft Sligo CDP 2017-2023
for public consultation – May 2017

Site Name (Site Code)	Annex I Habitats	Annex II Species	Conservation Objectives	Threats to Site Integrity
Flughany Bog (000497)	7110 Active raised bogs 7120 Degraded raised bogs still capable of natural regeneration 7150 Depressions on peat substrates of the Rhynchosporion		Objective 1: To maintain and, where possible, enhance the present extent and quality of the core area of active raised bog (4 ha). Objective 2: To improve the quality of the active raised bog areas that show signs of drying out and are degrading and protect the present core area and increase the amount of good quality bog (40 ha). Objective 3: To maintain and enhance, where possible, the ecological value of seminatural habitats on the site, including the old cutover bog (14 ha) and scrub (1 ha). Objective 4: To maintain and, where possible, increase the population of important or protected species on the site, namely the Golden Plover and Red Grouse. Objective 5: To continue effective liaison between NPW and other interested parties (landowners, landusers, local authorities and any other interested parties) on management of the site.	Introduction of alien invasive species Illegal Dumping Changes in local hydrology including drainage Peat Extraction Overgrazing Forestry Burning Direct loss of habitat to development Arterial drainage/water abstraction/lowering of the regional water table Agricultural reclamation Introduction of alien invasive species Increased pollution/reduction in water quality
Killala Bay/Moy Estuary (000458)	1130 Estuaries 1140 Mudflats and sandflats not covered by seawater at low tide 1210 Annual vegetation of drift lines 2110 Embryonic shifting dunes 2120 Shifting dunes along the shoreline with <i>Ammophila arenaria</i> (white dunes) 2130 Fixed coastal dunes with herbaceous vegetation (grey dunes) 2190 Humid dune slacks 1310 <i>Salicornia</i> and other annuals colonizing mud and sand 1330 Atlantic salt meadows (<i>Glauco-Puccinellietalia maritimae</i>)		Generic Conservation Objectives as outlined in Section 4.2 apply	Decrease in water quality/Increased pollution Development of marinas and ports Disturbance to marine mammals Dumping at sea Direct loss of habitat to development Recreational/amenity use Agricultural improvements/Reclamation Drainage/Changes in local hydrology including water abstraction Erosion (natural and anthropogenic) Agricultural abandonment Overgrazing/undergrazing Bracken and scrub encroachment Tourism related development Introduction of alien invasive species Illegal Dumping Burning Quarrying/removal of sand Aquaculture

Natura Impact Report for the Proposed Amendments to Draft Sligo CDP 2017-2023
for public consultation – May 2017

Site Name (Site Code)	Annex I Habitats	Annex II Species	Conservation Objectives	Threats to Site Integrity
Knockalongy and Knockachree Cliffs (001669)	8210 Calcareous rocky slopes with chasmophytic vegetation 8220 Siliceous rocky slopes with chasmophytic vegetation 4010 Northern Atlantic wet heaths with Erica tetralix 7130 Blanket bog (*active only) 3110 Oligotrophic waters containing very few minerals of sandy plains (Littorelletalia uniflorae)	Killarney Fern	Objective 1: To maintain the Annex II species for which the cSAC has been selected at favourable conservation status - Killarney fern. Objective 2: To maintain the extent, species richness and biodiversity of the entire site. Objective 3: To establish effective liaison and cooperation with landowners, legal users and relevant authorities.	Changes in local hydrology including drainage Peat Extraction Overgrazing Forestry Burning Direct loss of habitat to development Arterial drainage/water abstraction/lowering of the regional water table Agricultural reclamation Introduction of alien invasive species Illegal Dumping Increased pollution/reduction in water quality Quarrying/removal of sand
Lough Arrow (001673)	3140 Hard oligo-mesotrophic waters with benthic vegetation of Chara spp.		Generic Conservation Objectives as outlined in Section 4.2 apply	Decrease in water quality/Increased pollution Changes in water flow rates Arterial drainage/water abstraction/lowering of the regional water table Siltation Loss of fringe vegetation Changes in seasonal water levels/fluctuations Direct loss of habitat to development Loading from effluents(WWTP) Recreation/amenity use Developments – marinas Introduction of alien invasive species Illegal Dumping

Natura Impact Report for the Proposed Amendments to Draft Sligo CDP 2017-2023
for public consultation – May 2017

Site Name (Site Code)	Annex I Habitats	Annex II Species	Conservation Objectives	Threats to Site Integrity
Lough Gill (001976)	3150 Natural eutrophic lakes with Magnopotamion or Hydrocharition type vegetation 91e0 Alluvial forests with Alnus glutinosa and Fraxinus excelsior (Alno-Padion, Alnion incanae, Salicion albae) 91a0 Old sessile oak woods with Ilex and Blechnum in British Isles	Sea Lamprey River Lamprey Brook Lamprey White -clawed Crayfish Atlantic Salmon Otter	Generic Conservation Objectives as outlined in Section 4.2 apply	Decrease in water quality/Increased pollution Changes in water flow rates Arterial drainage/water abstraction/lowering of the regional water table Siltation Loss of fringe vegetation Changes in seasonal water levels/fluctuations Direct loss of habitat to development Loading from effluents(WWTP) Recreation/amenity use Developments – marinas Introduction of alien invasive species Illegal Dumping Crayfish Fishing
Lough Hoe Bog (000633)	7130 Active blanket bog 3110 Oligotrophic waters containing very few minerals of sandy plains (Littorelletalia uniflorae)	White-clawed Crayfish Vertigo geyeri	Objective 1: To maintain and, where possible, enhance the extent and quality of the priority habitat, active blanket bog (40% of the site). Objective 2: To maintain and, where possible, enhance the extent and quality of other habitats occurring within the site. Objective 3: To maintain and, where possible increase the populations of the Annex II species; White-clawed Crayfish, the Land Snail Vertigo geyeri and the Red Data Book species Arctic Charr. Objective 4: To maintain effective liaison between NPW, relevant authorities and interested parties on the management of the site.	Changes in local hydrology including drainage Peat Extraction Overgrazing Forestry Burning Direct loss of habitat to development Arterial drainage/water abstraction/lowering of the regional water table Agricultural reclamation Introduction of alien invasive species Illegal Dumping Increased pollution/reduction in water quality
Lough Nabrickeagh Bog (000634)	7130 Active blanket bog		Generic Conservation Objectives as outlined in Section 4.2 apply	Changes in local hydrology including drainage Peat Extraction Overgrazing Forestry Burning Direct loss of habitat to development Arterial drainage/water abstraction/lowering of the regional water table Agricultural reclamation Introduction of alien invasive species Illegal Dumping

Natura Impact Report for the Proposed Amendments to Draft Sligo CDP 2017-2023
for public consultation – May 2017

Site Name (Site Code)	Annex I Habitats	Annex II Species	Conservation Objectives	Threats to Site Integrity
Ox Mountains Bogs (002006)	7130 Blanket bog (*active only) 4010 Northern Atlantic wet heaths with <i>Erica tetralix</i> 3160 Natural dystrophic lakes and ponds 3110 Oligotrophic waters containing very few minerals of sandy plains (<i>Littorelletalia uniflorae</i>) 7150 Depressions on peat substrates of the <i>Rhynchosporion</i>	<i>Vertigo geyeri</i>	Generic Conservation Objectives as outlined in Section 4.2 apply	Changes in local hydrology including drainage Peat Extraction Overgrazing Forestry Burning Direct loss of habitat to development Arterial drainage/water abstraction/lowering of the regional water table Agricultural reclamation Introduction of alien invasive species Illegal Dumping Increased pollution/reduction in water quality
River Moy (002298)	7110 Active raised bogs 7120 Degraded raised bogs still capable of natural regeneration 7150 Depressions on peat substrates of the <i>Rhynchosporion</i> 91A0 Old sessile oak woods with <i>Ilex</i> and <i>Blechnum</i> in British Isles 91E0 Alluvial forests with <i>Alnus glutinosa</i> and <i>Fraxinus excelsior</i> (<i>Alno-Padion</i> , <i>Alnion incanae</i> , <i>Salicion albae</i>)	<i>Salmo salar</i> <i>Petromyzon marinus</i> <i>Lampetra planeri</i> <i>Lutra lutra</i> <i>Austroptamobius pallipes</i>	Generic Conservation Objectives as outlined in Section 4.2 apply	Decrease in water quality/Increased pollution Changes in water flow rates Arterial drainage/water abstraction/lowering of the regional water table Siltation Loss of fringe vegetation Changes in seasonal water levels/fluctuations Direct loss of habitat to development Loading from effluents(WWTP) Recreation/amenity use Developments – marinas Introduction of alien invasive species Illegal Dumping Felling/Removal of Trees Crayfish Fishing

Natura Impact Report for the Proposed Amendments to Draft Sligo CDP 2017-2023
for public consultation – May 2017

Site Name (Site Code)	Annex I Habitats	Annex II Species	Conservation Objectives	Threats to Site Integrity
Streedagh Point Dunes (001680)	herbaceous vegetation (grey dunes) 2120 Shifting dunes along the shoreline with <i>Ammophila arenaria</i> (white dunes) 1330 Atlantic salt meadows (<i>Glauco-Puccinellietalia maritimae</i>) 1410 Mediterranean salt meadows (<i>Juncetalia maritimi</i>) 1220 Perennial vegetation of stony banks 1140 Mudflats and sandflats not covered by seawater at low tide	<i>Vertigo angustior</i>	Objective 1: To maintain the Annex 1 habitats for which the cSAC has been selected at favourable conservation status; e.g. Fixed coastal dunes with herbaceous vegetation (14%), Shifting dunes along the shoreline with <i>Ammophila arenaria</i> (White dunes) (mapped with Fixed coastal dunes), Perennial vegetation of stony banks (2%), Atlantic salt meadows (<i>Glauco-Puccinellietalia maritimae</i>) (3%), Mediterranean salt meadows (mapped with Atlantic salt meadows) and Mudflats and sandflats not covered by seawater at low tide (50%) Objective 2: To maintain the favourable conservation status of the Annex II invertebrate, the Land Snail <i>Vertigo angustior</i> within the site Objective 3: To maintain the extent, biodiversity and species richness of the site. Objective 4: To establish effective liaison and cooperation with landowners, legal users and relevant authorities	Agricultural improvements/Reclamation Drainage/Changes in local hydrology including water abstraction Erosion (natural and anthropogenic) Agricultural abandonment Overgrazing/undergrazing Bracken and scrub encroachment Tourism related development Decrease in water quality/increased pollution Direct loss of habitat to development Tourism related development Introduction of alien invasive species Illegal Dumping Burning Quarrying/removal of sand Aquaculture
Templehouse and Cloonacleigha Loughs (000636)	3140 Hard oligo-mesotrophic waters with benthic vegetation of <i>Chara</i> spp. 3260 Water courses of plain to montane levels with the <i>Ranunculion fluitantis</i> and <i>Callitriche-Batrachion</i> vegetation 7120 Degraded raised bogs still capable of natural regeneration 6410 <i>Molinia</i> meadows on calcareous, peaty or clayey-silt-laden soils (<i>Molinion caeruleae</i>) 91E0 Alluvial forests with <i>Alnus glutinosa</i> and <i>Fraxinus excelsior</i> (<i>Alno-Padion</i> , <i>Alnion incanae</i> , <i>Salicion albae</i>)		Objective 1: To maintain the Annex I habitats for which the cSAC has been selected at favourable conservation status; Hard oligo-mesotrophic waters with the benthic vegetation of <i>Chara</i> spp. (27% area of the site) and water courses of plain to montane levels with the <i>Ranunculion fluitantis</i> and <i>Callitriche-Batrachion</i> vegetation (6% area of the site) Objective 2: To maintain the extent, biodiversity and species richness of the site Objective 3: To establish effective liaison and cooperation with landowners, legal users and relevant authorities	Decrease in water quality/Increased pollution Changes in water flow rates Arterial drainage/water abstraction/lowering of the regional water table Siltation Loss of fringe vegetation Changes in seasonal water levels/fluctuations Direct loss of habitat to development Loading from effluents(WWTP) Recreation/amenity use Developments – marinas Introduction of alien invasive species Illegal Dumping

Natura Impact Report for the Proposed Amendments to Draft Sligo CDP 2017-2023
for public consultation – May 2017

Site Name (Site Code)	Annex I Habitats	Annex II Species	Conservation Objectives	Threats to Site Integrity
Turloughmore (000637)	3180 Turlough		Generic Conservation Objectives as outlined in Section 4.2 apply	Agricultural improvements/Reclamation Drainage/Changes in local hydrology water quality/pollution (including groundwater) Agricultural abandonment Overgrazing/Undergrazing Direct loss of habitat to development Bracken and scrub encroachment Impacts to local geology/geomorphology e.g. quarrying/rock blasting Introduction of alien invasive species Illegal Dumping
Union Wood (000638)	91A0 Old Sessile oak woods with Ilex and Blechnum in British Isles		Objective 1: To maintain the Annex I habitat for which the cSAC has been selected at favourable conservation status; Old sessile oak woods with Ilex and Blechnum in the British Isles (38% area of the site). Objective 2: To maintain other habitats at favourable conservation status, such as mixed woodland, heath, exposed rock, old walls and streams. Objective 3: To maintain the populations of notable species on the site at favourable conservation status, such as Pine Marten, Otter, Red Squirrel, Badger and Bats. Objective 4: To increase public awareness and appreciation of the site. Objective 5: To establish a Nature Reserve within the cSAC. Objective 6: To establish effective liaison and cooperation with landowners, legal users and relevant authorities.	Direct loss of habitat to development Amenity/recreational use Invasive species Lack of/inappropriate woodland management Overgrazing (deer) Introduction of alien invasive species Illegal Dumping Felling/Removal of Trees
Unshin River (001898)	91E0 Alluvial forests with Alnus glutinosa and Fraxinus excelsior 3260 Water courses of plain to montane levels with the Ranunculum fluitantis and Callitriche-Batrachion vegetation	Otter Atlantic Salmon	Generic Conservation Objectives as outlined in Section 4.2 apply	Decrease in water quality/Increased pollution Changes in water flow rates Arterial drainage/water abstraction/lowering of the regional water table Siltation Loss of fringe vegetation Changes in seasonal water levels/fluctuations Direct loss of habitat to development Loading from effluents(WWTP) Recreation/amenity use Developments – marinas Introduction of alien invasive species Illegal Dumping

Table 3.1b: SACs within 15km of the boundary of County Sligo

Site Name (Site Code)	Annex I Habitats	Annex II Species	Conservation Objectives	Threats to Site Integrity
Arroo Mountain (001403)	7130 Blanket bog (*active only) 4010 Northern Atlantic wet heaths with Erica tetralix 8210 Calcareous rocky slopes with chasmophytic vegetation 7220 Petrifying springs with tufa formation (Cratoneurion) 8120 Calcareous and calcshist screes of the montane to alpine levels (Thlaspietea rotundifolii)		Generic Conservation Objectives as outlined in Section 4.2 apply	Changes in local hydrology including drainage, peat extraction, overgrazing, forestry, burning, direct loss of habitat to development, arterial drainage/ water abstraction/ lowering of the regional water table, agricultural reclamation. Introduction of alien invasive species Illegal Dumping
Bellanagare Bog (000592)	7110 Active raised bogs 7120 Degraded raised bogs still capable of natural regeneration 7150 Depressions on peat substrates of the Rhynchosporion		Generic Conservation Objectives as outlined in Section 4.2 apply	Changes in local hydrology including drainage Climate change (increased/reduced rainfall) Erosion, landslips Peat Extraction Overgrazing/undergrazing Forestry Burning Direct loss of habitat to development Arterial drainage/water abstraction/ lowering of the regional water table Agricultural reclamation/improvement Recreational/Amenity Use (walking, horse riding, cycling, quads and motorbikes) Introduction of alien invasive species Illegal Dumping
Boleybrack Mountain (002032)	7130 Blanket bog (*active only) 4010 Northern Atlantic wet heaths with Erica tetralix 3160 Natural dystrophic lakes and ponds 4030 European dry heaths 6410 Molinia meadows on calcareous, peaty or clayey-silt-laden soils (Molinion caeruleae)		Generic Conservation Objectives as outlined in Section 4.2 apply	Changes in local hydrology, peat extraction, overgrazing, forestry, burning, direct loss of habitat to development, arterial drainage/ water abstraction/ lowering of the regional water table, agricultural reclamation. Introduction of alien invasive species Illegal Dumping Increased pollution/reduction in water quality

Natura Impact Report for the Proposed Amendments to Draft Sligo CDP 2017-2023
for public consultation – May 2017

Site Name (Site Code)	Annex I Habitats	Annex II Species	Conservation Objectives	Threats to Site Integrity
Callow Bog (000595)	Active raised bogs [7110] Degraded raised bogs still capable of natural regeneration [7120] Depressions on peat substrates of the Rhynchosporion [7150]		To restore the favourable conservation condition of active raised bogs in Callow Bog SAC.	Changes in local hydrology including drainage Climate change (increased/reduced rainfall) Erosion, landslips Peat Extraction Overgrazing/undergrazing Forestry Burning Direct loss of habitat to development Arterial drainage/water abstraction/ lowering of the regional water table Agricultural reclamation/improvement Recreational/Amenity Use (walking, horse riding, cycling, quads and motorbikes) Introduction of alien invasive species Illegal Dumping
Cloonakillina Lough (001899)	Transition mires and quaking bogs [7140]		To maintain or restore the favourable conservation condition of the Annex I habitat(s) and/or the Annex II species for which the SAC has been selected.	Fire and fire suppression Sylviculture, forestry Grazing Leisure fishing Mowing/cutting of grassland
Cloonshanville Bog (000614)	91D0 Bog woodland 7110 Active raised bogs 7120 Degraded raised bogs still capable of natural regeneration 7150 Depressions on peat substrates of the Rhynchosporion		Generic Conservation Objectives as outlined in Section 4.2 apply	Changes in local hydrology including drainage Climate change (increased/reduced rainfall) Erosion, landslips Peat Extraction Overgrazing/undergrazing Forestry Burning Direct loss of habitat to development Arterial drainage/water abstraction/ lowering of the regional water table Agricultural reclamation/improvement Recreational/Amenity Use (walking, horse riding, cycling, quads and motorbikes) Introduction of alien invasive species Illegal Dumping Felling/Removal of Trees

Natura Impact Report for the Proposed Amendments to Draft Sligo CDP 2017-2023
for public consultation – May 2017

Site Name (Site Code)	Annex I Habitats	Annex II Species	Conservation Objectives	Threats to Site Integrity
Cuilcagh Anierin Uplands (00584)	7130 Blanket bog (*active only) 3130 Oligotrophic to mesotrophic standing waters with vegetation of the Littorelletea uniflorae and/or of the Isoëto-Nanojuncetea 3160 Natural dystrophic lakes and ponds 4010 Northern Atlantic wet heaths with Erica tetralix 6230 Species-rich Nardus grasslands, on siliceous substrates in mountain areas (and submountain areas, in Continental Europe) 8220 Siliceous rocky slopes with chasmophytic vegetation 4030 European dry heaths		Generic Conservation Objectives as outlined in Section 4.2 apply	Changes in local hydrology including drainage Climate change (increased/reduced rainfall) Erosion, landslips Peat Extraction Overgrazing/undergrazing Forestry Burning Direct loss of habitat to development Arterial drainage/water abstraction/ lowering of the regional water table Agricultural reclamation/improvement Recreational/Amenity Use (walking, horse riding, cycling, quads and motorbikes) Introduction of alien invasive species Illegal Dumping Increased pollution/reduction in water quality
Derrinea Bog (000604)	7110 Active raised bogs 7120 Degraded raised bogs still capable of natural regeneration 7150 Depressions on peat substrates of the Rhynchosporion		Generic Conservation Objectives as outlined in Section 4.2 apply	Changes in local hydrology including drainage Climate change (increased/reduced rainfall) Erosion, landslips Peat Extraction Overgrazing/undergrazing Forestry Burning Direct loss of habitat to development Arterial drainage/water abstraction/ lowering of the regional water table Agricultural reclamation/improvement Recreational/Amenity Use (walking, horse riding, cycling, quads and motorbikes) Introduction of alien invasive species Illegal Dumping
Drumalough Bog (002338)	Active raised bogs [7110] Degraded raised bogs still capable of natural regeneration [7120] Depressions on peat substrates of the Rhynchosporion [7150]		To restore the favourable conservation condition of Active raised bogs in Drumalough Bog SAC, as defined by the conservation objectives for the site.	Modification of hydrographic functioning, general Invasive, non-native species Disposal of household waste

Natura Impact Report for the Proposed Amendments to Draft Sligo CDP 2017-2023
for public consultation – May 2017

Site Name (Site Code)	Annex I Habitats	Annex II Species	Conservation Objectives	Threats to Site Integrity
Dunmuckrum Turloughs (002303)	3180 Turlough		Generic Conservation Objectives as outlined in Section 4.2 apply	Agricultural improvements/reclamation; drainage/changes in local hydrology including water abstraction; erosion (natural and anthropogenic); water quality/pollution; agricultural abandonment; overgrazing/undergrazing; direct loss of habitat to development; bracken & scrub encroachment; amenity/recreation use; tourism related development. Introduction of alien invasive species Illegal Dumping
Glenade Lough (001919)	Natural eutrophic lakes with Magnopotamion or Hydrocharition - type vegetation [3150]	Austroptamobius pallipes (White-clawed Crayfish) [1092] Najas flexilis (Slender Naiad) [1833]	To maintain or restore the favourable conservation condition of the Annex I habitat(s) and/or the Annex II species for which the SAC has been selected.	Decrease in water quality/Increased pollution Changes in water flow rates Arterial drainage/water abstraction/lowering of the regional water table Siltation Loss of fringe vegetation Changes in seasonal water levels/fluctuations Direct loss of habitat to development Loading from effluents(WWTP) Recreation/amenity use Developments – marinas Introduction of alien invasive species Illegal Dumping Crayfish Fishing
Lackan Saltmarsh and Kilcummin Head (000516)	Salicornia and other annuals colonising mud and sand [1310] Atlantic salt meadows (Glauco-Puccinellietalia maritimae) [1330] Mediterranean salt meadows (Juncetalia maritimi) [1410] Shifting dunes along the shoreline with Ammophila arenaria (white dunes) [2120] Fixed coastal dunes with herbaceous vegetation (grey dunes) [2130]*		To maintain or restore the favourable conservation condition of the Annex I habitat(s) and/or the Annex II species for which the SAC has been selected.	Decrease in water quality/Increased pollution Development of marinas and ports Disturbance to marine mammals Dumping at sea Direct loss of habitat to development Recreational/amenity use Agricultural improvements/Reclamation Drainage/Changes in local hydrology including water abstraction Erosion (natural and anthropogenic) Agricultural abandonment Overgrazing/undergrazing Bracken and scrub encroachment Tourism related development Introduction of alien invasive species Illegal Dumping Burning Quarrying/removal of sand Aquaculture

Natura Impact Report for the Proposed Amendments to Draft Sligo CDP 2017-2023
for public consultation – May 2017

Site Name (Site Code)	Annex I Habitats	Annex II Species	Conservation Objectives	Threats to Site Integrity
Lough Melvin (000428)	3130 Oligotrophic to mesotrophic standing waters	Atlantic Salmon Otter	Generic Conservation Objectives as outlined in Section 4.2 apply	Water quality/ pollution, changes in flow rates, arterial drainage/water abstraction/ lowering of the regional water table, loss of fringe vegetation, changes in seasonal water levels/ fluctuations, direct loss of habitat to development, loading from effluents (WWTP), recreation/ amenity use. Introduction of alien invasive species Illegal Dumping Increased pollution/reduction in water quality
St John's Point (000191)	1170 Reefs 6210 Semi-natural dry grasslands and scrubland facies on calcareous substrates (Festuco Brometalia) (*important orchid sites) 6410 Molinia meadows on calcareous, peaty or clayey-silt-laden soils (Molinion caeruleae) 7230 Alkaline fens 8240 Limestone pavements 8330 Submerged or partly submerged sea caves 1160 Large shallow inlets and bays		Generic Conservation Objectives as outlined in Section 4.2 apply	Water quality/pollution (including groundwater); development of marinas and ports; disturbance of marine mammals; dumping at sea; direct loss of habitat to development; recreational/amenity use; agricultural improvements;/reclamation; agricultural abandonment; overgrazing/undergrazing; quarrying on esker ridges and limestone pavement; bracken & scrub development; drainage/changes in local hydrology; turf/peat extraction in fens; impacts of local geology/geomorphology (e.g. quarrying/rock blasting) for turloughs & groundwater fed fens. Introduction of alien invasive species Illegal Dumping Quarrying/removal of sand Aquaculture
Tullaghanrock Bog (002354)	7110 Active raised bogs 7120 Degraded raised bogs still capable of natural regeneration 7150 Depressions on peat substrates of the Rhynchosporion		Generic Conservation Objectives as outlined in Section 4.2 apply	Changes in local hydrology including drainage Climate change (increased/reduced rainfall) Erosion, landslips Peat Extraction Overgrazing/undergrazing Forestry Burning Direct loss of habitat to development Arterial drainage/water abstraction/ lowering of the regional water table Agricultural reclamation/improvement Recreational/Amenity Use (walking, horse riding, cycling, quads and motorbikes) Introduction of alien invasive species Illegal Dumping

Natura Impact Report for the Proposed Amendments to Draft Sligo CDP 2017-2023
for public consultation – May 2017

Site Name (Site Code)	Annex I Habitats	Annex II Species	Conservation Objectives	Threats to Site Integrity
Urlaur Lakes (001571)	Hard oligo-mesotrophic waters with benthic vegetation of Chara spp. [3140]		To maintain or restore the favourable conservation condition of the Annex I habitat(s) and/or the Annex II species for which the SAC has been selected.	<p>Decrease in water quality/Increased pollution</p> <p>Changes in water flow rates</p> <p>Arterial drainage/water abstraction/lowering of the regional water table</p> <p>Siltation</p> <p>Loss of fringe vegetation</p> <p>Changes in seasonal water levels/fluctuations</p> <p>Direct loss of habitat to development</p> <p>Loading from effluents(WWTP)</p> <p>Recreation/amenity use</p> <p>Developments – marinas</p> <p>Introduction of alien invasive species</p> <p>Illegal Dumping</p>

Table 3.2a: SPAs in County Sligo

Site Name (Site Code)	Conservation Interests	Conservation Objectives	Threats to Site Integrity
Ardboline Island and Horse Island 004135	Site is selected for: Cormorant, Barnacle Goose Additional Special Conservation Interests: Corncrake	To maintain the special conservation interests for this SPA at favourable conservation status: Cormorant, Barnacle Goose, Corncrake.	Direct and indirect impacts to the habitats of the bird species of conservation interests (loss of habitat) Direct loss of habitat to development Water quality/pollution Disturbance including recreation/amenity use Introduction of alien invasive species Illegal Dumping Disturbance from Recreational/amenity use Inappropriate land management
Aughris Head 004133	Site is selected for: Kittiwake	To maintain the special conservation interests for this SPA at favourable conservation status: Kittiwake.	Direct and indirect impacts to the habitats of the bird species of conservation interests (loss of habitat) Direct loss of habitat to development Water quality/pollution Disturbance including recreation/amenity use Introduction of alien invasive species Illegal Dumping Disturbance from Recreational/amenity use Inappropriate land management
Ballintemple and Ballygilgan 004234	Barnacle Goose (<i>Branta leucopsis</i>) [A045]	To maintain or restore the favourable conservation condition of the bird species listed as Special Conservation Interests for this SPA: Barnacle Goose.	Direct and indirect impacts to the habitats of the bird species of conservation interests (loss of habitat)
Ballysadare Bay 004129 Site	Site is selected for: Light-bellied Brent Goose, Bar-tailed Godwit. Additional Special Conservation Interests: Grey Plover, Dunlin, Redshank, Wetland & Waterbirds	To maintain the special conservation interests for this SPA at favourable conservation status: Light-bellied Brent Goose, Bar-tailed Godwit, Grey Plover, Dunlin, Redshank, Wetland & Waterbirds.	Direct and indirect impacts to the habitats of the bird species of conservation interests (loss of habitat) Direct loss of habitat to development Water quality/pollution Disturbance including recreation/amenity use Introduction of alien invasive species Illegal Dumping Disturbance from Recreational/amenity use Inappropriate land management
Cummeen Strand 004035	Site is selected for: Light-bellied Brent Goose. Additional Special Conservation Interests: Oystercatcher, Redshank, Wetland & Waterbirds.	To maintain the special conservation interests for this SPA at favourable conservation status: Light-bellied Brent Goose, Oystercatcher, Redshank, Wetland & Waterbirds.	Direct and indirect impacts to the habitats of the bird species of conservation interests (loss of habitat) Direct loss of habitat to development Water quality/pollution Disturbance including recreation/amenity use Introduction of alien invasive species Illegal Dumping Disturbance from Recreational/amenity use Inappropriate land management

Natura Impact Report for the Proposed Amendments to Draft Sligo CDP 2017-2023
for public consultation – May 2017

Site Name (Site Code)	Conservation Interests	Conservation Objectives	Threats to Site Integrity
Drumcliff Bay 004013	Site is selected for: Barnacle Goose, Sanderling. Additional Special Conservation Interests: Wetland & Waterbirds	To maintain the special conservation interests for this SPA at favourable conservation status: Barnacle Goose, Sanderling, Wetland & Waterbirds.	Direct and indirect impacts to the habitats of the bird species of conservation interests (loss of habitat) Direct loss of habitat to development Water quality/pollution Disturbance including recreation/amenity use Introduction of alien invasive species Illegal Dumping Disturbance from Recreational/amenity use Inappropriate land management
Inishmurray 004068	Site is selected for: Barnacle Goose, Arctic Tern. Additional Special Conservation Interests: Storm Petrel, Shag, Herring Gull.	To maintain the special conservation interests for this SPA at favourable conservation status: Barnacle Goose, Arctic Tern, Storm Petrel, Shag, Herring Gull.	Direct and indirect impacts to the habitats of the bird species of conservation interests (loss of habitat) Direct loss of habitat to development Water quality/pollution Disturbance including recreation/amenity use Introduction of alien invasive species Illegal Dumping Disturbance from Recreational/amenity use Inappropriate land management
Killala Bay/Moy Estuary 004036	Site is selected for: Ringed Plover, Bar-tailed Godwit, Additional Special Conservation Interests: Golden Plover, Grey Plover, Sanderling, Dunlin, Curlew, Redshank, Wetland & Waterbirds.	To maintain the special conservation interests for this SPA at favourable conservation status: Ringed Plover, Bar-tailed Godwit, Golden Plover, Grey Plover, Sanderling, Dunlin, Curlew, Redshank, Wetland & Waterbirds.	Direct and indirect impacts to the habitats of the bird species of conservation interests (loss of habitat) Direct loss of habitat to development Water quality/pollution Disturbance including recreation/amenity use Introduction of alien invasive species Illegal Dumping Disturbance from Recreational/amenity use Inappropriate land management
Lough Arrow 004050	Site is selected for: Little Grebe. Additional Special Conservation Interests: Goldeneye, Wetlands & Waterbirds.	To maintain the special conservation interests for this SPA at favourable conservation status: Little Grebe, Goldeneye, Wetlands & Waterbirds.	Direct and indirect impacts to the habitats of the bird species of conservation interests (loss of habitat) Direct loss of habitat to development Water quality/pollution Disturbance including recreation/amenity use Introduction of alien invasive species Illegal Dumping Disturbance from Recreational/amenity use Inappropriate land management
Lough Gara 004048	Site is selected for: Whooper Swan, Greenland Whitefronted Goose. Additional Special Conservation Interests: Wetland & Waterbirds.	To maintain the special conservation interests for this SPA at favourable conservation status: Whooper Swan, Greenland White-fronted Goose, Wetland & Waterbirds.	Direct and indirect impacts to the habitats of the bird species of conservation interests (loss of habitat) Direct loss of habitat to development Water quality/pollution Disturbance including recreation/amenity use Introduction of alien invasive species Illegal Dumping Disturbance from Recreational/amenity use Inappropriate land management

Table 3.2b: SPAs within 15km of the boundary of County Sligo

Site Name (Site Code)	Conservation Interests	Conservation Objectives	Threats to Site Integrity
Bellangare Bog 004105	Greenland White-fronted Goose, Golden Plover.	To maintain the Annex I habitat for which the cSAC has been selected at favourable conservation status: Depressions on peat substrates, Greenland White-fronted Goose, Golden Plover.	Direct and indirect impacts to the habitats of the bird species of conservation interests (loss of habitat) Water quality/pollution / Changes in flow rates Arterial drainage/water abstraction/ lowering of the regional water table/ Siltation Loss of fringe vegetation Changes in seasonal water levels/fluctuations Direct loss of habitat to development Loading from effluents (WWTP) Recreation/Amenity Use Developments - marinas, fishing Introduction of alien invasive species Illegal Dumping Disturbance from Recreational/amenity use Inappropriate land management
Donegal Bay 004151	Great Northern Diver, Light-bellied Brent Goose, Common Scoter, Wetland & Waterbirds.	To maintain the special conservation interests for this SPA at favourable conservation status: Great Northern Diver, Light-bellied Brent Goose, Common Scoter, Wetland & Waterbirds.	Direct and indirect impacts to the habitats of the bird species of conservation interests (loss of habitat) Direct loss of habitat to development Water quality/pollution Disturbance including recreation/amenity use Introduction of alien invasive species Illegal Dumping Disturbance from Recreational/amenity use Inappropriate land management
Inishduff 004115	Shag (<i>Phalacrocorax aristotelis</i>) [A018]	To maintain or restore the favourable conservation condition of the bird species listed as Special Conservation Interests for this SPA: Shag.	Direct and indirect impacts to the habitats of the bird species of conservation interests (loss of habitat)
Lough Conn and Lough Cullin 004428	Tufted Duck (<i>Aythya fuligula</i>) [A061] Common Scoter (<i>Melanitta nigra</i>) [A065] Common Gull (<i>Larus canus</i>) [A182] Greenland White-fronted Goose (<i>Anser albifrons flavirostris</i>) [A395] Wetland and Waterbirds [A999]	To maintain or restore the favourable conservation condition of the bird species listed as Special Conservation Interests for this SPA: Tufted Duck, Common Scoter, Common Gull, Greenland White-fronted Goose, Wetland and Waterbirds.	Direct and indirect impacts to the habitats of the bird species of conservation interests (loss of habitat)

3.6 Is the Plan Necessary to Management of Natura 2000 Sites?

The Plan is not directly connected with or necessary to the management of the Natura 2000 sites in the County. However, it does include, inter alia, measures to protect, conserve and manage the County's natural heritage in a prudent and sustainable manner, including Natura 2000 sites, and to seek its enhancement where appropriate and feasible.

3.7 Likely Changes to Natura 2000 Sites

The possible impacts that might arise from the proposed amendments to the Draft Plan have been examined in the context of a number of factors that could potentially affect the integrity of the Natura 2000 sites.

Table 3.3 below presents a summary of the findings of this exercise. The screening matrix for the proposed amendments to the Plan with an Appropriate Assessment Screening Response provided in each case is provided in **Appendix 1** (for the proposed amendments for Vol. 1) & **Appendix 2** (for the proposed amendments for Vol. 2).

Those sites for which potential effects and impacts have been identified have been taken forward to Stage 2 Appropriate Assessment. Those for which no potential impacts are anticipated as a result of implementation of the Plan do not require Stage 2 Appropriate Assessment and are 'screened-out' at this stage of the assessment.

**Table 3.3: Summary of Screening Assessment completed for Natura 2000 sites within and adjacent to Co. Sligo.
(For detailed screening see Appendix 1 & 2)**

Site Name [Site Code]	Reduction of Habitat Area	Disturbance to Key Species	Habitat or Species Fragmentation	Reduction in Species Density	Changes in Key Indicators of Conservation Value (Water Quality Etc.)	Screening Conclusion
Ballysadare Bay SAC [000622]	None	None	None	None	None	No impacts identified subject to implementation of environmental protection policies contained in the Draft CDP.
Ben Bulbin, Gleniff and Glenade Complex SAC [000623]	None	None	None	None	None	No impacts identified subject to implementation of environmental protection policies contained in the Draft CDP.
Bricklieve Mountains and Keishcorran SAC [001656]	None	None	None	None	None	No impacts identified subject to implementation of environmental protection policies contained in the Draft CDP.
Bunduff Lough and Machair/Trawlua/Mullaghmore SAC [000625]	None	None	None	None	None	No impacts identified subject to implementation of environmental protection policies contained in the Draft CDP.
Cummeen Strand/Drumcliff Bay (Sligo Bay) SAC [000627]	None	None	None	None	None	No impacts identified subject to implementation of environmental protection policies contained in the Draft CDP.
Doocastle Turlough SAC [000492]	None	None	None	None	None	No impacts identified subject to implementation of environmental protection policies contained in the Draft CDP.
Flughany Bog SAC [000497]	None	None	None	None	None	No impacts identified subject to implementation of environmental protection policies contained in the Draft CDP.
Killala Bay/Moy Estuary SAC [000458]	None	None	None	None	None	No impacts identified subject to implementation of environmental protection policies contained in the Draft CDP.

Table 3.3: Summary of Screening Assessment completed for Natura 2000 sites within and adjacent to Co. Sligo.

(For detailed screening see Appendix 1 & 2)

Site Name [Site Code]	Reduction of Habitat Area	Disturbance to Key Species	Habitat or Species Fragmentation	Reduction in Species Density	Changes in Key Indicators of Conservation Value (Water Quality Etc.)	Screening Conclusion
Knockalongy and Knockachree Cliffs SAC [001669]	None	None	None	None	None	No impacts identified subject to implementation of environmental protection policies contained in the Draft CDP.
Lough Arrow SAC [001673]	None	None	None	None	None	No impacts identified subject to implementation of environmental protection policies contained in the Draft CDP.
Lough Gill SAC [001976]	None	None	None	None	None	No impacts identified subject to implementation of environmental protection policies contained in the Draft CDP.
Lough Hoe Bog SAC [000633]	None	None	None	None	None	No impacts identified subject to implementation of environmental protection policies contained in the Draft CDP.
Lough Nabrickeagh Bog SAC [000634]	None	None	None	None	None	No impacts identified subject to implementation of environmental protection policies contained in the Draft CDP.
Ox Mountains Bog SAC [002006]	None	None	None	None	None	No impacts identified subject to implementation of environmental protection policies contained in the Draft CDP.
River Moy SAC [002298]	None	None	None	None	None	No impacts identified subject to implementation of environmental protection policies contained in the Draft CDP.
Streedagh Point Dunes SAC [001682]	None	None	None	None	None	No impacts identified subject to implementation of environmental protection policies contained in the Draft CDP.

**Table 3.3: Summary of Screening Assessment completed for Natura 2000 sites within and adjacent to Co. Sligo.
(For detailed screening see Appendix 1 & 2)**

Site Name [Site Code]	Reduction of Habitat Area	Disturbance to Key Species	Habitat or Species Fragmentation	Reduction in Species Density	Changes in Key Indicators of Conservation Value (Water Quality Etc.)	Screening Conclusion
Templehouse and Cloonacleigha Loughs SAC [000636]	None	None	None	None	None	No impacts identified subject to implementation of environmental protection policies contained in the Draft CDP.
Turloughmore SAC [000637]	None	None	None	None	None	No impacts identified subject to implementation of environmental protection policies contained in the Draft CDP.
Union Wood SAC [000638]	None	None	None	None	None	No impacts identified subject to implementation of environmental protection policies contained in the Draft CDP.
Unshin River SAC [001898]	Potential Impacts	Potential Impacts	Potential Impacts	Potential Impacts	Potential Impacts	Likely significant impact arising from modification of Ballysadare Zoning Map by changing the zoning on the site shown as A-MP-23-4 from 'open space' to 'mixed uses'.
Arroo Mountain SAC [001403]	None	None	None	None	None	No impacts identified subject to implementation of environmental protection policies contained in the Draft CDP.
Bellanagare Bog SAC [000592]	None	None	None	None	None	No impacts identified subject to implementation of environmental protection policies contained in the Draft CDP.
Boleybrack Mountain SAC [002032]	None	None	None	None	None	No impacts identified subject to implementation of environmental protection policies contained in the Draft CDP.
Callow Bog SAC [000595]	None	None	None	None	None	No impacts identified subject to implementation of environmental protection policies contained in the Draft CDP.

**Table 3.3: Summary of Screening Assessment completed for Natura 2000 sites within and adjacent to Co. Sligo.
(For detailed screening see Appendix 1 & 2)**

Site Name [Site Code]	Reduction of Habitat Area	Disturbance to Key Species	Habitat or Species Fragmentation	Reduction in Species Density	Changes in Key Indicators of Conservation Value (Water Quality Etc.)	Screening Conclusion
Cloonakillina Lough SAC [001899]	None	None	None	None	None	No impacts identified subject to implementation of environmental protection policies contained in the Draft CDP.
Cloonshanville Bog SAC [000614]	None	None	None	None	None	No impacts identified subject to implementation of environmental protection policies contained in the Draft CDP.
Cuilcagh Anierin Uplands SAC [00584]	None	None	None	None	None	No impacts identified subject to implementation of environmental protection policies contained in the Draft CDP.
Derrinea Bog SAC [000604]	None	None	None	None	None	No impacts identified subject to implementation of environmental protection policies contained in the Draft CDP.
Drumalough Bog SAC [002338]	None	None	None	None	None	No impacts identified subject to implementation of environmental protection policies contained in the Draft CDP.
Dunmuckrum Turloughs SAC [002303]	None	None	None	None	None	No impacts identified subject to implementation of environmental protection policies contained in the Draft CDP.
Glenade Lough SAC [001919]	None	None	None	None	None	No impacts identified subject to implementation of environmental protection policies contained in the Draft CDP.
Lackan Saltmarsh and Kilcummin Head SAC [000516]	None	None	None	None	None	No impacts identified subject to implementation of environmental protection policies contained in the Draft CDP.

**Table 3.3: Summary of Screening Assessment completed for Natura 2000 sites within and adjacent to Co. Sligo.
(For detailed screening see Appendix 1 & 2)**

Site Name [Site Code]	Reduction of Habitat Area	Disturbance to Key Species	Habitat or Species Fragmentation	Reduction in Species Density	Changes in Key Indicators of Conservation Value (Water Quality Etc.)	Screening Conclusion
Lough Melvin SAC [000428]	None	None	None	None	None	No impacts identified subject to implementation of environmental protection policies contained in the Draft CDP.
St. John's Point SAC [000191]	None	None	None	None	None	No impacts identified subject to implementation of environmental protection policies contained in the Draft CDP.
Tullaghanrock Bog SAC [002354]	None	None	None	None	None	No impacts identified subject to implementation of environmental protection policies contained in the Draft CDP.
Urlaur Lakes SAC [001571]	None	None	None	None	None	No impacts identified subject to implementation of environmental protection policies contained in the Draft CDP.
Ardboline Island and Horse Island SPA [004135]	None	None	None	None	None	No impacts identified subject to implementation of environmental protection policies contained in the Draft CDP.
Aughris Head SPA [004133]	None	None	None	None	None	No impacts identified subject to implementation of environmental protection policies contained in the Draft CDP.
Ballintemple and Ballygilgan SPA [004234]	None	None	None	None	None	No impacts identified subject to implementation of environmental protection policies contained in the Draft CDP.
Ballysadare Bay SPA [004129]	None	None	None	None	None	No impacts identified subject to implementation of environmental protection policies contained in the Draft CDP.

**Table 3.3: Summary of Screening Assessment completed for Natura 2000 sites within and adjacent to Co. Sligo.
(For detailed screening see Appendix 1 & 2)**

Site Name [Site Code]	Reduction of Habitat Area	Disturbance to Key Species	Habitat or Species Fragmentation	Reduction in Species Density	Changes in Key Indicators of Conservation Value (Water Quality Etc.)	Screening Conclusion
Cummeen Strand SPA [004035]	None	None	None	None	None	No impacts identified subject to implementation of environmental protection policies contained in the Draft CDP.
Drumcliff Bay SPA [004013]	None	None	None	None	None	No impacts identified subject to implementation of environmental protection policies contained in the Draft CDP.
Inishmurray SPA [004068]	None	None	None	None	None	No impacts identified subject to implementation of environmental protection policies contained in the Draft CDP.
Killala Bay/Moy Estuary SPA [004036]	None	None	None	None	None	No impacts identified subject to implementation of environmental protection policies contained in the Draft CDP.
Lough Arrow SPA [004050]	None	None	None	None	None	No impacts identified subject to implementation of environmental protection policies contained in the Draft CDP.
Lough Gara SPA [004048]	None	None	None	None	None	No impacts identified subject to implementation of environmental protection policies contained in the Draft CDP.
Bellanagare Bog SPA [004105]	None	None	None	None	None	No impacts identified subject to implementation of environmental protection policies contained in the Draft CDP.
Donegal Bay SPA [004151]	None	None	None	None	None	No impacts identified subject to implementation of environmental protection policies contained in the Draft CDP.

**Table 3.3: Summary of Screening Assessment completed for Natura 2000 sites within and adjacent to Co. Sligo.
(For detailed screening see Appendix 1 & 2)**

Site Name [Site Code]	Reduction of Habitat Area	Disturbance to Key Species	Habitat or Species Fragmentation	Reduction in Species Density	Changes in Key Indicators of Conservation Value (Water Quality Etc.)	Screening Conclusion
Inishduff SPA [004115]	None	None	None	None	None	No impacts identified subject to implementation of environmental protection policies contained in the Draft CDP.
Lough Conn and Lough Cullin SPA [004428]	None	None	None	None	None	No impacts identified subject to implementation of environmental protection policies contained in the Draft CDP.

3.8 Screening of Proposed Amendments

The proposed amendments to the draft County Development Plan were examined to determine whether they could give rise to impacts on any of the Natura 2000 sites listed above. In general, any development that may result from implementation of the Plan, such as construction of housing, roads, rail, water and wastewater infrastructure, gas, electricity and telecommunications infrastructure could lead to an infinite number of impacts depending on where development is sited, the scale of development and types and quantities of emissions. In practice and as outlined in the EU document “Assessment of plans and projects significantly affecting Natura 2000 sites: Methodological guidance on the provisions of Article 6(3) and (4) of the Habitats Directive 92/43/EEC”, and the national guidance document ‘Appropriate Assessment of Plans and Projects in Ireland. Guidance for Planning Authorities’, impacts that could potentially occur through the implementation of the plan can be categorised under a number of headings.

In the first instance, the proposed amendments to the plan were reviewed to identify amendments that could give rise to:

- direct impacts on habitats listed on Annex I of the Habitats Directive and for which any site is designated;
- reduction in the area of any habitats within any of the sites identified;
- direct or indirect damage to the physical quality of the environment (e.g. water quality) within Natura 2000 sites;
- serious or ongoing disturbance to species for which any of the above listed Natura 2000 site is selected (e.g. increased noise, illumination, human activity);
- direct or indirect damage to the size, characteristics or reproductive ability of populations of species for which any Natura 2000 site is designated;
- activities which interfere with mitigation measures put in place for other plans or projects.

Table 3.3 identifies any potential impacts on Natura 2000 sites, SAC’s and SPA’s. This table is derived from the European Commission Environment DG document “*Assessment of plans and projects significantly affecting Natura 2000 sites: Methodological guidance on the provisions of Article 6(3) and (4) of the Habitats Directive 92/43/EEC*”.

Table 3.3 provides an overview of the outcome of the detailed Habitats Directive Assessment carried out on the draft Plan and which is presented in detail in **Appendix 1 & 2**. The assessment focused on five key impact areas, namely;

- Reduction of habitat area
- Disturbance to key species
- Habitat or species fragmentation
- Reduction in species density
- Changes in key indicators of conservation value (water quality etc.)

Regard was also had to possible significant in-combination or cumulative effects/impacts of the proposed amendments to the Draft Sligo County Development Plan 2017-2023 with other plans and projects on the fifty Natura 2000 sites which were subject to Habitats Directive Assessment.

The screening matrix for the proposed amendments to the Plan with an Appropriate Assessment Screening Response provided in each case is provided in **Appendix 1** (for the proposed amendments to Vol. 1) & **Appendix 2** (for the proposed amendments to Vol. 2).

3.9 Screening Conclusion

The likely impacts that will arise from the proposed amendments to the Sligo County Development Plan 2017-2023 have been examined in the context of the key environmental factors that could potentially affect the integrity of the Natura 2000 network, e.g. disturbance, habitat loss, etc. and the results of the Screening Assessment, as presented in **Table 3.3 and Appendices 1 & 2**.

Table 3.3 indicates a screening conclusion of ‘No impacts identified subject to implementation of environmental protection policies contained in the Draft CDP’ for sites where no negative impact is anticipated on the Conservation Objectives or on the overall integrity of the site.

Table 3.3 indicates “Potential Impact” for those sites where it is certain, likely or uncertain at this stage that impacts on the site may arise as a result of implementation of the proposed amendments to the Plan.

Following, Appropriate Assessment Screening, it was concluded that there would be likely significant impact arising from the modification of the zoning map for Ballysadare by changing the zoning on the site shown as amendment **A-MP-23-4** from ‘open space’ to ‘mixed uses’.

On the basis of this report, it is concluded therefore, that the implementation of proposed amendment A-MP-23-4 to the draft Sligo County Development Plan 2017-2023 is likely to have a significant effect on the Natura 2000 network.

Accordingly the proposed amendment is likely to have a significant impact of the Unshin River SAC, which requires further assessment and has been brought forward for Stage 2 Appropriate Assessment in **Section 4** of this Natura Impact Report.

Section 4 Stage 2 – Natura Impact Report

4.1 Overview

This section of the Natura Impact Report (NIR) records the Stage 2 Appropriate Assessment carried out on proposed amendment **A-MP-23-4** to the Sligo County Development Plan 2017-2023, as proposed at a Council meeting on 27 March 2017. Following screening, it was considered that that the proposed amendment was likely to have a likely significant effect on the Unshin River cSAC. Accordingly the proposed amendment was brought forward to Stage 2 – Appropriate Assessment.

Table 4.1 below provides details of the Unshin River SAC and its qualifying interests.

Table 4.1 The Unshin River SAC and its features of interest, conservation objectives and threats to site integrity.

Site Name (Site Code)	Unshin River (001898)
Features of Interest Annex I Habitats Annex II Species	<ul style="list-style-type: none"> ▪ Water courses of plain to montane levels with the Ranunculion fluitantis and Callitriche-Batrachion vegetation [3260] ▪ Semi-natural dry grasslands and scrubland facies on calcareous substrates (Festuco-Brometalia) (* important orchid sites) [6210] ▪ Molinia meadows on calcareous, peaty or clayey-silt-laden soils (Molinion caeruleae) [6410] ▪ Alluvial forests with Alnus glutinosa and Fraxinus excelsior (Alno-Padion, Alnion incanae, Salicion albae) [91E0] ▪ Salmo salar (Salmon) [1106] ▪ Lutra lutra (Otter) [1355]
Conservation Objectives	Objective: To maintain or restore the favourable conservation condition of the Annex I habitat(s) and/or the Annex II species for which the SAC has been selected – (see features of interest above)
Threats to Site Integrity	<ul style="list-style-type: none"> ▪ Decrease in water quality/Increased pollution ▪ Changes in water flow rates ▪ Arterial drainage/water abstraction/lowering of the regional water table ▪ Siltation ▪ Loss of fringe vegetation ▪ Changes in seasonal water levels/fluctuations ▪ Direct loss of habitat to development ▪ Loading from effluents(WWTP) ▪ Recreation/amenity use ▪ Developments – marinas ▪ Introduction of alien invasive species ▪ Illegal Dumping

4.2 Likely Significant Effects of the proposed amendment on the Conservation Objectives of Natura 2000 sites

The proposed amendment to the Draft Plan is summarised below in **Table 4.2**, along with a summary of the likely significant effects of the proposed amendment. Significant negative impacts would be expected to result from the proposed amendment arising from direct and indirect impacts on habitats (Annex I) and species (Annex II) listed in the Habitats Directive.

The integrity of the Unshin River SAC is likely to be negatively affected by the proposed amendment across a number of parameters including; direct loss of habitat and loss of fringe vegetation, habitat fragmentation, changes in hydrology, siltation, and increased pollution and erosion. Other significant effects include the introduction and spread of alien invasive species – (Giant Hogweed has been recorded on the lands), disturbance to species or habitats (e.g. increased noise, illumination, human activity) and direct or indirect damage to the populations of species for which the Natura 2000 site is designated.

The permanent loss of habitat to development and the likely impacts on Annex II species (Salmon and Otter) arising from the proposed amendments to the Draft Plan are significant negative effects on the conservation objectives and integrity of the Unshin River SAC.

Table 4.2 The proposed amendment to the Draft Plan and a summary of the likely significant effects of the amendment on the Unshin River SAC.

Site Name (Site Code)	Unshin River (001898)
Proposed Amendment to the Draft Plan	<ul style="list-style-type: none"> ▪ A-MP-23-4 Modify the Ballysadare Zoning Map by changing the zoning of the site shown as A-MP-23-4 from ‘open space’ to ‘mixed uses’. Sub no.104 and 105
Assessment	The subject lands are within the Unshin River SAC. Currently the site is partly brownfield (portable cabins are stored between the river bank and the built-up area) and partly greenfield. The rezoning of the riverside lands from open space to mixed uses is likely to have a significant negative effect on the Unshin River SAC, would conflict with nature conservation policies, set out in Section 7.1.1 of CDP (Vol. 1).
Likely Significant effect arising from the proposed amendment to the Draft Plan	<p>Significant negative impacts would be expected to result from the proposed amendment arising from direct and indirect impacts on habitats (Annex I) and species (Annex II) listed in the Habitats Directive.</p> <ul style="list-style-type: none"> ▪ Direct loss of habitat to development • Loss of fringe vegetation • Habitat loss and fragmentation ▪ Changes in water flow rates ▪ Changes in seasonal water levels/fluctuations • Decrease in water quantity/quality, changes in local hydrology • Increased pollution/erosion • Siltation ▪ Introduction and spread of alien invasive species – Giant Hogweed recorded on the lands • Disturbance to species or habitats (e.g. increased noise, illumination, human activity). • Direct or indirect damage to the populations of species for which the Natura 2000 site is designated.

4.3 Consultation with Environmental Authorities

Submissions made during the consultation process for the proposed amendments to the Draft Plan will be considered in finalising the Draft Sligo County Development Plan 2017-2023, prior to its consideration and adoption by Sligo County Council.

4.4 Conclusion

This Natura Impact Report presents the findings of a Stage 2 Appropriate Assessment undertaken on the proposed amendments to the Draft Sligo County Development Plan 2017-2023.

The Appropriate Assessment Screening (Stage 1) identified that there was potential for likely significant effects arising from the adoption and implementation of a proposed amendment (**A-MP-23-4**) to the Draft Plan. Accordingly, Stage 2 Appropriate Assessment (this Natura Impact Report) was undertaken to identify potential likely significant effects on Natura 2000 sites arising from the proposed amendment to the Draft Plan.

The adoption of the proposed amendment (**A-MP-23-4**) would conflict with the provisions of the Habitats Directive and the nature conservation policies, set out in Section 7.1.1 of CDP (Vol. 1).

Furthermore, the adoption of the Draft Plan with amendment (**A-MP-23-4**) would contravene Section 177. V(c) of the Planning and Development Act 2000 (as amended), which specifies that planning authorities shall make a land use plan only after having determined that the said plan would not adversely affect the integrity of a European site.

Accordingly, on the basis of the Precautionary Principle, it can be objectively concluded that adverse impacts of the proposed amendment (A-MP-23-4) on the integrity of the Unshin River Natura 2000 site remain and that the proposed amendment should not be adopted as part of the Draft Sligo County Development Plan 2017-2023.

Section 5 Relevant Documents and References

DAHG, National Parks and Wildlife Service. 2013. The Status of EU Protected Habitats and Species in Ireland.

DAHRRGA, National Parks and Wildlife Service. Various Years. Natura 2000 Site Synopses.

Environment, Heritage and Local Government. 2009. Appropriate Assessment of Plans and Projects in Ireland. Guidance for Planning Authorities.

European Communities. 2000. Managing Natura 2000 sites. The provisions of Article 6 of the Habitats Directive 92/43/EEC. Luxembourg.

European Communities. 2002. Assessment of plans and projects significantly affecting Natura 2000 sites. Methodological guidance on the provisions of Article 6(3) and (4) of the Habitats Directive 92/43/EEC. Luxembourg.

Appendix 1

Appropriate Assessment Screening of Proposed Amendments to Volume 1 of the Draft Sligo County Development Plan 2017-2023

Appendix 1: Appropriate Assessment Screening of Proposed Amendments to Volume 1 of the Draft Plan

Note

The screening assessments outlined below relate to the **proposed amendments only**. Where it is indicated that there would be no risk of significant impact on Natura 2000 sites arising from additional text, or by the deletion of text or a paragraph, it means that the initial assessment of the relevant policy or objective remains unchanged, i.e. it is the same as indicated in the original Habitats Directive Assessment (September 2016).

Where there would be positive impacts, these will be cumulated with the original assessment in the final Appropriate Assessment, should the respective amendments be adopted.

Where there would be potential significant impacts on Natura 2000 sites arising from proposed additional text or deletion of text, the assessment attached to the proposed amendment indicates the existing Draft CDP policies that can ensure the avoidance of any likely significant impacts on Natura 2000 sites.

In addition, any proposed amendments with likely significant impacts on Natura 2000 sites and which remain after avoidance measures have been considered will be brought forward to Stage 2 Appropriate Assessment in this Natura Impact Report.

Text or description of proposed amendment or text of amended policy/objective	Potential Impact	Risk of Significant Impact (Y/N)	Specific Action Required: Avoidance/Policy Deletion or Amendment
Throughout the Plan			
A-0-1 Throughout the final Plan, replace ' <i>Habitats Directive Assessment</i> ' with Appropriate Assessment and ' <i>Natura 2000 sites</i> ' with European Sites , where appropriate.	None	N	Not Required
Chapter 2. Strategic Environmental Assessment			
A-2-1 In the final Plan, change the name of Chapter 2 (Strategic Environmental Assessment (SEA)) to Chapter 2 (Strategic Environmental Assessment (SEA) and Appropriate Assessment (AA)) , and insert a subsection summarising the appropriate assessment process and its conclusion.	None	N	Not Required

Text or description of proposed amendment or text of amended policy/objective	Potential Impact	Risk of Significant Impact (Y/N)	Specific Action Required: Avoidance/Policy Deletion or Amendment
<p>A-2-2 In Section 2.4 of the final Plan, include a brief summary of the EPA scoping submission received at pre-draft stage.</p> <p>A-2-3 In the final Plan, add a subsection summarising the key outputs from the SEA, Appropriate Assessment and Strategic Flood Risk Assessment processes which influenced the Plan policies and objectives.</p>			
Chapter 3. Core Strategy			
<p>A-3-1 In the introduction to Chapter 3 County Sligo: Core Strategy, insert and highlight the following text after the last paragraph on p. 15 of the Draft Plan:</p> <p>All the policies and objectives for development contained in Volume 1 and Volume 2 of this Plan are subject to compliance with the requirements of the Habitats Directive and, where relevant, those of the Birds Directive, EIA directive and relevant national legislation.</p>	Positive impacts anticipated from amended text.	N	Not required
<p>A-3-2 In Section 3.5 Local area plans (p. 30 of the Draft Plan), include additional text explaining the requirement to comply with Section 10(2) of the Planning and Development Act 2000 (as amended by the Urban Regeneration and Housing Act 2015) relating to areas in need of regeneration and insert the following:</p> <p>Urban regeneration objective</p> <p>It is an objective of Sligo County Council to:</p> <p>O-REG-1 Identify areas in need of regeneration in Sligo City and, if appropriate, in the Key Support Towns of Ballymote, Enniscrone and Tobercurry, as part of the process of review or preparation of the respective local area plans.</p>	Any development within the county could potentially have direct and/or indirect impacts on the Natura 2000 network through habitat fragmentation or habitat loss and disturbance of species. Pollution of watercourses may occur during construction and through the discharge of treated wastewater.	Y	The following objectives/policies will ensure that impacts are avoided: SP-S-5 & SP-Z-6. P-NH-1, P-NH-3 & P-NH-4. P-DSNC -1 to -3. O-SNC -1. P-INV-1 & P-INV-2.

Text or description of proposed amendment or text of amended policy/objective	Potential Impact	Risk of Significant Impact (Y/N)	Specific Action Required: Avoidance/Policy Deletion or Amendment
<p>A-3-3 In Section 3.6 Miscellaneous zoning provisions, subsection Strategic zoning policies (p. 32 of the Draft CDP), modify SP-Z-4 as follows:</p> <p>SP-Z-4 On lands included in the Strategic Land Reserve, permit the development of the following, insofar as they do not adversely impact on the potential for comprehensive and co-ordinated development of surrounding lands:</p> <p>individual houses for landowners, including their sons and daughters, who wish to build a first home for their permanent occupation on the landholding associated with their principal family residence where they have lived for a minimum period of seven years;</p> <p>social and special-needs housing;</p> <p>community facilities and other non-residential developments compatible with residential uses;</p> <p>housing on residentially zoned lands adjacent to existing residential development within the Sligo and Environs Plan area where the land is adequately serviced;</p> <p>-- student accommodation.</p>	<p>Any development within the county could potentially have direct and/or indirect impacts on the Natura 2000 network through habitat fragmentation or habitat loss and disturbance of species. Pollution of watercourses may occur during construction and through the discharge of treated wastewater.</p>	<p>Y</p>	<p>The following objectives/policies will ensure that impacts are avoided: SP-S-5 & SP-Z-6. P-NH-1, P-NH-3 & P-NH-4. P-DSNC -1 to -3. O-SNC -1. P-INV-1 & P-INV-2.</p>
<p>A-3-4 In Section 3.7 Implementation, subsection 3.7.3 Bonds (p. 34 of the Draft CDP), modify the text to make it in accordance with the requirements set out in the Department's Circular Letter PL 11.2013.</p>	<p>None</p>	<p>N</p>	<p>Not Required</p>
<p>A-3-5 In Section 3.7.5 Monitoring and reporting of the final Plan (see renumbering indicated under A 3-6), include a reference to the monitoring measures described in Section 10 of the Environmental Report and summarised in Table 10.1 of the ER</p>	<p>None</p>	<p>N</p>	<p>Not Required</p>

Text or description of proposed amendment or text of amended policy/objective	Potential Impact	Risk of Significant Impact (Y/N)	Specific Action Required: Avoidance/Policy Deletion or Amendment
A-3-6 In Section 3.7 Implementation (p. 34 of the Draft Plan), insert a new subsection containing details on the vacant site levy.	None	N	Not Required
Chapter 4. Economic development			
A-4-1 In Section 4.3 Rural Development and enterprise , subsection Rural development and diversification policies (p. 42 of the Draft Plan), include an additional policy , as follows: P-RDD-5 Encourage the growth or expansion of existing rural based small-scale industry and enterprise in rural County Sligo.	Any development within the county could potentially have direct and/or indirect impacts on the Natura 2000 network through habitat fragmentation or habitat loss and disturbance of species. Pollution of watercourses may occur during construction and through the discharge of treated wastewater.	Y	The following objectives/policies will ensure that impacts are avoided: SP-S-5 & SP-Z-6. P-NH-1, P-NH-3 & P-NH-4. P-DSNC -1 to -3. O-SNC -1. P-INV-1 & P-INV-2.
A-4-2 In Section 4.4 Tourism , subsection Wild Atlantic Way Objectives (p. 53 of the Draft Plan), include an additional objective , as follows: O-WAW-4 Monitor the future development of the County's section of the Wild Atlantic Way touring route to ensure that the scenic and tourism value of this important amenity is maintained. This will be done in co-operation with state agencies, local community groups and other bodies interested in protecting the coastal environment and in improving access and visitor management to the Wild Atlantic Way.	Positive impacts anticipated from additional objective.	N	Not required

Text or description of proposed amendment or text of amended policy/objective	Potential Impact	Risk of Significant Impact (Y/N)	Specific Action Required: Avoidance/Policy Deletion or Amendment
A-4-3 In Section 4.4. Tourism Development , modify Section 4.4.2 Trends and assumptions for the future (p. 47 of the Draft Plan) by updating the numbers of tourist accommodation premises.	None	N	Not Required
A-4-4 Modify Box 4.D in Section 4.4.5 Cultural tourism (p. 50 of the Draft CDP) by adding another potential project: Spanish Armada Visitor Centre - Conservation, management and interpretation of the Spanish Armada wrecks site at Streedagh and development of a visitor centre.	Any development within the county could potentially have direct and/or indirect impacts on the Natura 2000 network through habitat fragmentation or habitat loss and disturbance of species. Pollution of watercourses may occur during construction and through the discharge of treated wastewater.	Y	The following objectives/policies will ensure that impacts are avoided: SP-S-5 & SP-Z-6. P-NH-1, P-NH-3 & P-NH-4. P-DSNC -1 to -3. O-SNC -1. P-INV-1 & P-INV-2.
Chapter 5. Housing			
A-5-1 In Section 5.3 Housing in rural areas (p. 72 of the Draft Plan), modify the text of subsection 5.3.1 Rural housing policy areas by clarifying the criteria for assessing applications.	None	N	Not Required
A-5-2 In Section 5.3 Housing in rural areas , modify the text of the subsection on Housing policy in Rural Areas under Urban Influence (p. 73 of the Draft Plan) by removing temporal and spatial constraints and by adding “ AND where such persons can demonstrate that the home they propose is in the interest of the proper planning and sustainable development of the area ”.	Any development within the county could potentially have direct and/or indirect impacts on the Natura 2000 network through habitat fragmentation or habitat loss and	Y	The following objectives/policies will ensure that impacts are avoided: SP-S-5 & SP-Z-6. P-NH-1, P-NH-3 & P-NH-4. P-DSNC -1 to -3. O-SNC -1. P-INV-1

Text or description of proposed amendment or text of amended policy/objective	Potential Impact	Risk of Significant Impact (Y/N)	Specific Action Required: Avoidance/Policy Deletion or Amendment
	disturbance of species. Pollution of watercourses may occur during construction and through the discharge of treated wastewater.		& P-INV-2.
<p>A-5-3 In Section 5.3 Housing in rural areas, modify the text of the subsection on Housing policy in green belts and sensitive landscapes by removing temporal and spatial constraints and by adding “AND where such persons can demonstrate that the home they propose is in the interest of the proper planning and sustainable development of the area”.</p>	Any development within the county could potentially have direct and/or indirect impacts on the Natura 2000 network through habitat fragmentation or habitat loss and disturbance of species. Pollution of watercourses may occur during construction and through the discharge of treated wastewater.	Y	The following objectives/policies will ensure that impacts are avoided: SP-S-5 & SP-Z-6. P-NH-1, P-NH-3 & P-NH-4. P-DSNC -1 to -3. O-SNC -1. P-INV-1 & P-INV-2.
<p>A-5-4 Modify the title of Section 5.5 (p.79 of the Draft Plan) as follows: Section 5.5 Special needs housing Housing for persons with diverse needs</p>	None	N	Not Required
<p>A-5-5 Modify Section 5.5.2 (p.79 of the Draft Plan) of the Draft Plan by updating the information on the Strategic Plan for Housing People with a Disability.</p>	None	N	Not Required

Text or description of proposed amendment or text of amended policy/objective	Potential Impact	Risk of Significant Impact (Y/N)	Specific Action Required: Avoidance/Policy Deletion or Amendment
<p>A-5-6 In Section 5.6 Miscellaneous housing provisions, subsection 5.6.1 Holiday homes and second homes (p. 81 of the Draft CDP), add the following policy:</p> <p>P-HSH-4 Ensure that new holiday home developments are constructed to the standards and specifications applicable to housing intended for permanent occupation. Exceptions may be made for specific types of holiday accommodation designed exclusively for short-term occupation by tourists (e.g. apart-hotels, chalets etc.)</p>	None	N	Not Required
<p>A-5-7 In Section 5.6 Miscellaneous housing provisions, subsection 5.6.2 Derelict houses (p. 82-83 of the Draft CDP), modify policy P-DHOU-1 as follows:</p> <p>P-DHOU-1 Encourage the renovation and reuse of existing derelict houses and consider proposals for replacement houses on their merits. The structures proposed for replacement should generally be intact and exhibit the main characteristics of a dwelling. The location, siting and design of any such replacement house shall reflect those of the existing derelict dwelling. <i>Where historic or vernacular buildings are located on the site, consideration should be given to their retention or incorporation into any proposed development.</i></p>	None	N	Not Required
Chapter 6. Community facilities			
<p>A-6-1 In Section 6.4 Arts and cultural facilities (p. 90 of the Draft Plan), insert a subsection on public libraries.</p>	None	N	Not Required

Text or description of proposed amendment or text of amended policy/objective	Potential Impact	Risk of Significant Impact (Y/N)	Specific Action Required: Avoidance/Policy Deletion or Amendment
<p>A-6-2 In Section 6.4 Arts and cultural facilities, add the following policies:</p> <p>P-AC-3 Support the improvement of library facilities and services, particularly in those communities which have undergone rapid increases in population or designated for future development.</p> <p>P-AC-4 Support the delivery of the objectives and actions set out in the Sligo Library Service Plan 2017-2022 in providing community-based educational, cultural and lifelong learning centres.</p>	<p>Any development within the county could potentially have direct and/or indirect impacts on the Natura 2000 network through habitat fragmentation or habitat loss and disturbance of species. Pollution of watercourses may occur during construction and through the discharge of treated wastewater.</p>	<p>Y</p>	<p>The following objectives/policies will ensure that impacts are avoided: SP-S-5 & SP-Z-6. P-NH-1, P-NH-3 & P-NH-4. P-DSNC -1 to -3. O-SNC -1. P-INV-1 & P-INV-2.</p>
<p>A-6-3 In Section 6.6. Healthcare facilities (p. 92 of the Draft CDP), modify policy P-HC-3 as follows:</p> <p>P-HC-3 Support the provision of healthcare services and universally accessible facilities for people with learning all types of disabilities and special needs, in accordance with the recommended standards set out in <i>Building for everyone – a Universal Design Approach (NDA, 2012)</i>.</p>	<p>None</p>	<p>N</p>	<p>Not Required</p>
<p>A-6-4 In Section 6.7 Outdoor recreation, subsection 6.7.4 Outdoor recreational amenities (p. 94 of the Draft CDP), add relevant text and a table under the heading Public rights of way.</p>	<p>None</p>	<p>N</p>	<p>Not Required</p>
<p>A-6-5 In Section 6.7 Outdoor recreation, subsection 6.7.4 Outdoor recreational amenities (p. 94-95 of the Draft Plan), insert a subsection explaining the nature of Permissive Trails.</p>	<p>None</p>	<p>N</p>	<p>Not Required</p>

Text or description of proposed amendment or text of amended policy/objective	Potential Impact	Risk of Significant Impact (Y/N)	Specific Action Required: Avoidance/Policy Deletion or Amendment
<p>A-6-6 In Section 6.7 Outdoor recreation, subsection Section 6.7.4 Outdoor recreational policies (p. 97 of the Draft CDP), amend P-OR-14 as follows:</p> <p>P-OR-14 Preserve and improve access for the public to lakes, beaches, coastal, riverside, upland and other areas that have traditionally been used for outdoor recreation, subject to compliance with the requirements of the Habitats Directive. <i>Where feasible, apply or support the application of universal design principles, as recommended in Building for everyone – a Universal Design Approach (NDA, 2012).</i></p>	None	N	Not Required
<p>A-6-7 In Section 6.7 Outdoor recreation, subsection 6.7.4 Outdoor recreational amenities, insert the following outdoor recreation policy after P-OR-14 (all subsequent policies will be renumbered in the final version of the CDP):</p> <p>P-OR-15 <i>Support the sustainable development of water-based leisure, tourism and related activities in County Sligo, subject to compliance with the requirements of the Habitats Directive.</i></p>	Any development within the county could potentially have direct and/or indirect impacts on the Natura 2000 network through habitat fragmentation or habitat loss and disturbance of species. Pollution of watercourses may occur during construction and through the discharge of treated wastewater.	Y	The following objectives/policies will ensure that impacts are avoided: SP-S-5 & SP-Z-6. P-NH-1, P-NH-3 & P-NH-4. P-DSNC -1 to -3. O-SNC -1. P-INV-1 & P-INV-2.
Chapter 7. Heritage			
<p>A-7-1 In Chapter 7 Heritage, subsection Heritage - general objectives, add the following general heritage objective:</p> <p>O-H-3 <i>Prepare and support the implementation of a Green Infrastructure Strategy for</i></p>	Positive impacts anticipated from additional objective.	N	Not required

Text or description of proposed amendment or text of amended policy/objective	Potential Impact	Risk of Significant Impact (Y/N)	Specific Action Required: Avoidance/Policy Deletion or Amendment
<p style="text-align: center;">County Sligo, as resources allow.</p> <p>and insert a footnote including the definition of “green infrastructure”.</p>			
<p>A-7-2 In Section 7.1 Natural heritage and biodiversity, subsection 7.1.1. Designated sites for nature conservation (p. 103 of the Draft Plan), modify the text of policy P-DSNC-3 as follows:</p> <p>P-DSNC-3 Carry out an appropriate level of assessment for all development plans, land-use plans and projects that the Council authorizes or proposes to undertake or adopt, to determine the potential for these plans/projects to impact on designated sites, or proposed designated sites, in accordance with the Habitats Directive. All appropriate assessments shall be in compliance with the provisions of Part XAB of the Planning and Development Act 2000.</p>	Positive impacts anticipated from amended policy.	N	Not required
<p>A-7-3 In Section 7.1 Natural heritage and biodiversity, subsection 7.1.5 Trees, woodlands and hedgerows (p. 108-109 of the Draft CDP), make the following changes:</p> <p>7.1.5 Trees, woodlands and hedgerows</p> <p>Hedgerows constitute an important natural and historic resource, given their contribution to landscape quality, their ecological importance as wildlife habitats, corridors between habitats and historical significance as townland and field boundaries. Hedgerows are afforded protection under the Wildlife (Amendment) Act, 2000, which prohibits the cutting of hedges during the bird nesting period (1st March to 1st September).</p> <p>Woodlands, trees and hedgerows policies</p> <p>It is the policy of Sligo County Council to:</p> <p>P-WTH-1 Protect trees, woodlands and hedgerows from development that would impact</p>	Positive impacts anticipated from amended and new policies.	N	Not required

Text or description of proposed amendment or text of amended policy/objective	Potential Impact	Risk of Significant Impact (Y/N)	Specific Action Required: Avoidance/Policy Deletion or Amendment
<p>adversely upon them. Promote new tree and woodland planting and the enhancement of existing hedgerows by seeking increased coverage, in conjunction with new development using native species of local provenance, where possible.</p> <p>P-WTH-2 Discourage the felling of mature trees to facilitate development and, where appropriate, make use of tree preservation orders to protect important trees and groups of trees which may be at risk or have an important amenity or historic value.</p> <p>P-WTH-3 Require the planting of native broadleaved species, and species of local provenance, in new developments.</p> <p>P-WTH-4 Promote the planting of native tree and shrub species by committing to using native species (of local provenance wherever possible) in its landscaping works and on County Council property.</p>			
<p>A-7-4 In Section 7.1 Natural heritage and biodiversity, subsection 7.1.6 Inland waters, add the following text to Inland waters policy P-INW-1 (p. 110 of the Draft Plan):</p> <p>P-INW-1 Protect rivers, streams and other water courses and their associated Core riparian Zones (CRZ) from inappropriate development and maintain them in an open state, capable of providing suitable habitats for fauna and flora. Structures (e.g. bridges) crossing fisheries waters shall be clear-span and shall be designed and built in consultation with Inland Fisheries Ireland.</p>	Positive impacts anticipated from amended policy.	N	Not required
<p>A-7-5 In Section 7.3 Architectural Heritage, subsection 7.3.2 Protection of non-habitable structures (p. 120 of the Draft CDP), insert additional text listing items of street furniture which are part of the built and cultural heritage.</p>	None	N	Not Required
<p>A-7-6 In Section 7.3 Architectural Heritage, subsection 7.3.4 Town and village streetscapes (p. 120 of the Draft CDP), insert additional text defining vernacular built</p>	None	N	Not Required

Text or description of proposed amendment or text of amended policy/objective	Potential Impact	Risk of Significant Impact (Y/N)	Specific Action Required: Avoidance/Policy Deletion or Amendment
heritage.			
<p>A-7-7 In Section 7.3 Architectural heritage, add the following Architectural heritage policies:</p> <p>P-ARH-6 Promote the retention and re-use of the vernacular built heritage through increasing public awareness of its potential for re-use and its adaptability to change.</p> <p>P-ARH-7 When considering proposals to adapt vernacular buildings to meet contemporary living standards and needs, require applicants to apply the conservation principles and guidelines set out in the ICOMOS Charter on the Built Vernacular Heritage (Mexico 1999) – refer to Appendix H of this Plan.</p>	None	N	Not Required
<p>A-7-8 In Section 7.4 Landscape character, subsection 7.4.3 Current knowledge and policy (p. 124 of the Draft CDP), add clarifications to the definitions of Normal rural Landscapes and Scenic Routes.</p>	None	N	Not Required
<p>A-7-9 In Section 7.4 Landscape character, subsection Landscape character assessment and protection policies (p. 125 of the Draft CDP), amend policy P-LCAP-1 as follows:</p> <p>P-LCAP-1 Protect the physical landscape, visual and scenic character of County Sligo and seek to preserve the County's landscape character. by assessing all development proposals on the basis of the Landscape Characterisation Map.</p> <p>Planning applications that have the potential to impact significantly and adversely upon landscape character, or scenic views especially in <i>Sensitive Rural Landscapes, Visually Vulnerable Areas and along Scenic routes</i>, may be required to be accompanied by a visual impact assessment using agreed and appropriate viewing points and methods of assessment.</p>	None	N	Not Required

Text or description of proposed amendment or text of amended policy/objective	Potential Impact	Risk of Significant Impact (Y/N)	Specific Action Required: Avoidance/Policy Deletion or Amendment
<p>A-7-10 In Section 7.4 Landscape character, subsection Landscape character assessment and protection policies (p. 125 of the Draft CDP), amend policy P-LCAP-3 as follows:</p> <p>P-LCAP-3 Preserve the scenic views listed in Appendix F and the distinctive visual character of designated <i>Scenic Routes</i> by controlling development along designated Scenic such Routes and other roads, while facilitating developments that may be tied to a specific location or to the demonstrated needs of applicants to reside in a particular area.</p> <p>In all cases, strict location, siting and design criteria shall apply, as set out in Section 13.4 Residential development in rural areas (development management standards).</p>	None	N	Not Required
Chapter 8. Transport and mobility			
<p>A-8-1 In Section 8.1 National and regional transport policy (p. 127 of the Draft Plan), insert reference to the Spatial Planning and National Roads guidance document.</p>	None	N	Not Required
<p>A-8-2 In Section 8.1 National and regional transport policy – Transport strategic policies, add the following strategic transport policy (p. 129 of the Draft CDP):</p> <p>SP-TRA-8 Facilitate the roll-out of charging infrastructure for electric vehicles, in line with the <i>National Renewable Energy Action Plan's target for 10% of Ireland's vehicles to be electric by 2020.</i></p>	None	N	Not Required
<p>A-8-3 In Section 8.1 National and regional transport policy, modify the text of objective SO-TRA-3 as follows (p. 130 of the Draft CDP):</p> <p>SO-TRA-3 Initiate the preparation of a <i>Transportation Study for Sligo City & Environs by Transport Infrastructure Ireland (TII, previously NRA), the National Transportation Authority and the Department of Transport, subject to</i></p>	None	N	Not Required

Text or description of proposed amendment or text of amended policy/objective	Potential Impact	Risk of Significant Impact (Y/N)	Specific Action Required: Avoidance/Policy Deletion or Amendment
<p>available funding, and implement the recommendations of this Study subject to compliance with the Habitats Directive.</p>			
<p>A-8-4 In Section 8.2 Road network, subsection 8.2.1 National primary and secondary roads (p.132 of the Draft Plan), add clarification regarding national primary roads.</p>	None	N	Not Required
<p>A-8-5 In Section 8.2 Road network, subsection 8.2.1 National primary and secondary roads (p.132 of the Draft Plan), introduce a specific set of policies entitled National roads policies as follows:</p> <p>P-NR-1 Protect the traffic carrying capacity of national roads, the level of service they deliver and the period over which they continue to perform efficiently, by avoiding the creation of new access points or the generation of increased traffic from existing accesses onto the N-4, N-15, N-16, N-17 and N-59 outside the 50 km/h speed limit, in accordance with the DoECLG’s publication Spatial Planning and National Roads -Guidelines for Planning Authorities (2012).</p> <p>P-NR-2 Protect the route corridors necessary for the construction of new roads or the upgrading of existing national roads in Sligo, in accordance with the DoECLG’s publication Spatial Planning and National Roads -Guidelines for Planning Authorities (2012).</p> <p>P-NR-3 Apply the provisions of the Design Manual for Urban Roads and Streets (DTTS, DECLG 2013) to all development along national roads inside the 60-km/h speed limit zones in towns and villages.</p> <p>P-NR-4 Maintain the national road network in accordance with the TII Pavement Asset Management System.</p> <p>P-NR-5 Permit direct access to zoned lands along national roads inside the 50 km/h speed limit subject to normal planning considerations. Within transitional</p>	<p>Any development within the county could potentially have direct and/or indirect impacts on the Natura 2000 network through habitat fragmentation or habitat loss and disturbance of species. Pollution of watercourses may occur during construction and through the discharge of treated wastewater.</p>	Y	<p>The following objectives/policies will ensure that impacts are avoided: SP-S-5 & SP-Z-6. P-NH-1, P-NH-3 & P-NH-4. P-DSNC -1 to -3. O-SNC -1. P-INV-1 & P-INV-2.</p>

Text or description of proposed amendment or text of amended policy/objective	Potential Impact	Risk of Significant Impact (Y/N)	Specific Action Required: Avoidance/Policy Deletion or Amendment
<p>zones (between 50 km/h and 60 km/h speed limiting signs), access may be permitted, but only in limited circumstances, where it is in the interest of facilitating orderly urban development, and subject to a road safety audit carried out in accordance with TII requirements.</p>			
<p>A-8-6 In subsection National roads objectives (p. 133 of the Draft CDP), delete objective O-NR-3 (now proposed to be included as a policy under the National Roads policies).</p>	None	N	Not Required
<p>A-8-7 In subsection Non-national roads and bridges policies (p. 135 of the Draft CDP), add the following policy:</p> <p>P-NNR-5 Upgrade roads, footpaths, car-parking areas and junctions within the County's towns and villages in accordance with the provisions of the Design Manual for Urban Roads and Streets (DTTS, DECLG, 2013), subject to the availability of resources.</p>	Any development within the county could potentially have direct and/or indirect impacts on the Natura 2000 network through habitat fragmentation or habitat loss and disturbance of species. Pollution of watercourses may occur during construction and through the discharge of treated wastewater.	Y	The following objectives/policies will ensure that impacts are avoided: SP-S-5 & SP-Z-6. P-NH-1, P-NH-3 & P-NH-4. P-DSNC -1 to -3. O-SNC -1. P-INV-1 & P-INV-2.
<p>A-8-8 In Section 8.3 Cycle and pedestrian movements, modify objective O-CW-5 (p. 139 of the Draft Plan) as follows:</p> <p>O-CW-5 Seek the development of a footway and cycleway (greenway) on or alongside the disused closed railway line from Claremorris to Collooney to Bellaghy (Sligo/Mayo county boundary) insofar as such route does not compromise the reopening of the Western Rail Corridor, if reopening the railway line is deemed</p>	None	N	Not Required

Text or description of proposed amendment or text of amended policy/objective	Potential Impact	Risk of Significant Impact (Y/N)	Specific Action Required: Avoidance/Policy Deletion or Amendment
feasible’.			
A-8-9 In Section 8.3 Cycle and pedestrian movements , modify the wording of Objective O-CW-5 (p. 139 of the Draft Plan) by replacing “ disused railway line” with “ closed railway line”.	None	N	Not Required
Chapter 9. Environmental infrastructure			
A-9-1 In Section 9.5 Waste management (p. 161 of the Draft Plan) insert a new subsection detailing the location and the current state of Historic landfills in Co. Sligo.	None	N	Not Required
A-9-2 In subsection Waste management policies (p.164 of the Draft CDP), include three additional waste management policies as follows: <p>P-WM-6 Require any development proposals on known historic landfill sites or in their vicinity shall take into consideration the <i>EPA Code of Practice: Environmental Risk Assessment for Unregulated Waste Disposal Sites (April 2007)</i>. Where landfills meet the definition of a ‘closed landfill’, as set out in the <i>Waste Management (certification of historic unlicensed waste disposal and recovery activity) Regulations 2008</i> (S.I. No 524 of 2008), there will be a requirement for authorisation of the landfill by the EPA under those regulations.</p> <p>P-WM-7 Ensure that the zoning or the rezoning of known former landfill sites, as part of the preparation or review of local area plans, is the most appropriate having regard to the potential sensitivities of such lands.</p> <p>P-WM-8 Development proposals on brownfield sites – such as former petrol stations, fuel/chemical storage areas and similar sites – shall be required to undertake an assessment if the potential for contaminated materials, soils etc to be unearthed during demolition/construction works, and the associated</p>	Any development within the county could potentially have direct and/or indirect impacts on the Natura 2000 network through habitat fragmentation or habitat loss and disturbance of species. Pollution of watercourses may occur during construction and through the discharge of treated wastewater.	Y	The following objectives/policies will ensure that impacts are avoided: SP-S-5 & SP-Z-6. P-NH-1, P-NH-3 & P-NH-4. P-DSNC -1 to -3. O-SNC -1. P-INV-1 & P-INV-2.

Text or description of proposed amendment or text of amended policy/objective	Potential Impact	Risk of Significant Impact (Y/N)	Specific Action Required: Avoidance/Policy Deletion or Amendment
<p>environmental risks.</p> <p>Where any environmental risk is identified, appropriate investigations shall be undertaken to determine the nature and extent of any materials or contaminated soils on the proposed development sites.</p> <p>A site-specific remediation plan shall be prepared to ensure that the construction and operation phases of development do not result in risk to human health, water quality, biodiversity, fisheries, air quality etc.</p>			
<p>A-9-3 In Section 9.5 Waste management (p.161 of the Draft Plan), add the following waste management objective:</p> <p>O-WM-1 Ensure that the certification and remediation process of the known historic landfill at Finisklin is completed in accordance with the <i>EPA Code of Practice: Environmental Risk Assessment for Unregulated Waste Disposal Sites (April 2007)</i>.</p>	<p>Any development within the county could potentially have direct and/or indirect impacts on the Natura 2000 network through habitat fragmentation or habitat loss and disturbance of species. Pollution of watercourses may occur during construction and through the discharge of treated wastewater.</p>	Y	<p>The following objectives/policies will ensure that impacts are avoided: SP-S-5 & SP-Z-6. P-NH-1, P-NH-3 & P-NH-4. P-DSNC -1 to -3. O-SNC -1. P-INV-1 & P-INV-2.</p>
<p>A-9-4 Modify the text of Table 9.C Wastewater treatment plants in County Sligo (p. 151-157 of the Draft CDP) in accordance with the updates provided by Irish Water.</p>	None	N	Not Required

Text or description of proposed amendment or text of amended policy/objective	Potential Impact	Risk of Significant Impact (Y/N)	Specific Action Required: Avoidance/Policy Deletion or Amendment
Chapter 10. Environmental quality			
A-10-1 In Chapter 10 Environmental quality , Section 10.2 Air quality (p. 170 of the Draft Plan), insert an additional subsection containing information on radon gas .	None	N	Not Required
A-10-2 In Section 10.4 Coastal environment , subsection 10.4.1 Coastal zone (p.172 of the Draft Plan), modify the definition of the coastal zone and associated areas.	None	N	Not Required
A-10-3 In Section 10.4 Coastal environment , subsection 10.4.4 Developments on the foreshore and nearshore (p. 173 of the Draft Plan) replace the definition of the foreshore with an extended version.	None	N	Not Required
A-10-4 In Box 10.A Proposed coastal protection works (p. 176 of the Draft Plan,) modify the description of proposed works at Pullaheeny.	None	N	Not Required
<p>A-10-5 In Section 10.4 Coastal environment, subsection 10.4.6 Coastal protection, modify policy P-CP-2 (p. 176 of the Draft Plan) as follows:</p> <p>P-CP-2 Require that any development within the coastal zone is appropriately sited and designed having regard to coastal flooding, future shoreline erosion, predicted sea level rise and OPW flood mapping.</p>	Any development within the county could potentially have direct and/or indirect impacts on the Natura 2000 network through habitat fragmentation or habitat loss and disturbance of species. Pollution of watercourses may occur during construction and through the discharge of treated wastewater.	Y	The following objectives/policies will ensure that impacts are avoided: SP-S-5 & SP-Z-6. P-NH-1, P-NH-3 & P-NH-4. P-DSNC -1 to -3. O-SNC -1. P-INV-1 & P-INV-2.

Text or description of proposed amendment or text of amended policy/objective	Potential Impact	Risk of Significant Impact (Y/N)	Specific Action Required: Avoidance/Policy Deletion or Amendment
<p>A-10-6 In Section 10.6 Climate Change, subsection 10.6.2 Legislative Context (p.179 -180 of the Draft Plan), modify the text to reflect the most up-to-date stage of the preparation of the National Mitigation Plan.</p>	None	N	Not Required
<p>A-10-7 In Section 10.6 Climate Change, subsection 10.6.3 Role of the Local Authority (p. 180-181), insert the text requiring the repair of old bridges in preference to replacement.</p>	None	N	Not Required
<p>A-10-8 In Section 10.6 Climate change, subsection Climate adaptation and mitigation policies (p. 182 of the Draft Plan), insert the following additional policy:</p> <p>P-CAM-11 Support the repair of old structures where possible, in particular the repair of the stone arch bridge stock, in preference to replacement with high carbon materials.</p>	Any development within the county could potentially have direct and/or indirect impacts on the Natura 2000 network through habitat fragmentation or habitat loss and disturbance of species. Pollution of watercourses may occur during construction and through the discharge of treated wastewater.	Y	The following objectives/policies will ensure that impacts are avoided: SP-S-5 & SP-Z-6. P-NH-1, P-NH-3 & P-NH-4. P-DSNC -1 to -3. O-SNC -1. P-INV-1 & P-INV-2.
<p>A-10-9 In Section 10.7 Flood risk management (p. 183 of the Draft Plan), insert minor references to aquifers and karst areas.</p>	None	N	Not Required

Text or description of proposed amendment or text of amended policy/objective	Potential Impact	Risk of Significant Impact (Y/N)	Specific Action Required: Avoidance/Policy Deletion or Amendment
<p>A-10-10 In Section 10.7 Flood risk management, subsection 10.7.2 Progress in flood risk assessment, (p. 184 of the Draft Plan), update the text to reflect the current stage in the procedure for adopting the Flood risk Management Plans.</p>	None	N	Not Required
Chapter 11. Energy and telecommunications			
<p>A-11-1 In Section 11.1 Energy, subsection 11.1.7 Electricity transmission (p. 191 of the Draft CDP), add text reflecting the current stage of preparation of Grid Development Strategy.</p>	None	N	Not Required
<p>A-11-2 In Section 11.1 Energy, subsection Strategic energy objectives (p. 193 of the Draft CDP), add the following objective:</p> <p>SO-EN-2 Undertake an analysis of suitable areas for wind energy and prepare a map showing County Sligo's Landscape Suitability for Wind Energy Developments, in accordance with Section 3.5 of the Wind Energy Guidelines (2006).</p>	None	N	Not Required
Chapter 13. Development management standards			
<p>A-13-1 In Section 13.2 General development standards, subsection 13.2.14 Undergrounding of cables (p. 218 of the Draft Plan), modify the first paragraph by adding reference to Architectural Conservation Areas.</p>	None	N	Not Required

Text or description of proposed amendment or text of amended policy/objective	Potential Impact	Risk of Significant Impact (Y/N)	Specific Action Required: Avoidance/Policy Deletion or Amendment
A-13-2 In Section 13.2 General development standards , subsection 13.2.15 Illumination and spread of light (p. 218-219 of the Draft Plan) inserting additional details on external illumination and floodlighting .	None	N	Not Required
A-13-3 In Section 13.3 Residential development in urban areas , subsection 13.3.15 Accommodation for dependent relatives , make minor modifications to the text describing design requirements.	None	N	Not Required
A-13-4 In Section 13.4 Residential development in rural areas (p. 230 of the Draft CDP), modify the text by adding a subsection listing " normal planning considerations ".	None	N	Not Required
A-13-5 In Section 13.4 Residential development in rural areas , subsection 13.4.2 Site selection – locating a house in the landscape (p. 230 – 231 of the Draft Plan), add clarifications regarding site characteristics for rural houses.	None	N	Not Required
A-13-6 In Section 13.4 Residential development in rural areas , delete Table 13.A which details some principles of vernacular rural house design.	None	N	Not Required
A-13-7 In Section 13.4.3 Rural house design , under the heading Design Statement (p. 233 of the Draft Plan), remove the paragraph recommending the employment of registered architects to build rural houses.	None	N	Not Required
A-13-8 In Section 13.5 Retail development standards , subsection 13.5.9 Shop fronts and signage (p. 239 - 240 of the Draft Plan), add the two more standards to the existing list.	None	N	Not Required
A-13-9 In Section 13.8 Transportation, roads and parking , subsection 13.8.1 Access onto national roads (p. 246 of the Draft Plan), delete the paragraph relating to exceptions from restriction of access onto national roads.	None	N	Not Required

Text or description of proposed amendment or text of amended policy/objective	Potential Impact	Risk of Significant Impact (Y/N)	Specific Action Required: Avoidance/Policy Deletion or Amendment
A-13-10 In Section 13.8 Transportation, roads and parking , subsection 13.8.3 Entrances and sightlines (p. 248 of the Draft Plan), modify the Rural housing subsection by inserting details relating to road safety and the preservation or replacement of roadside boundaries.	None	N	Not Required
A-13-11 In Section 13.8 Transportation, roads and parking , subsection 13.8.5 Car parking requirements, layout and design (p. 249 of the Draft Plan), insert an additional subsection on charging points for electric vehicles .	None	N	Not Required
A-13-12 In Section 13.8 Transportation, roads and parking , subsection Car parking standards (p. 249 of the Draft Plan), modify Table 13.B Car parking standards by adding the words " gross floor area " where previously omitted.	None	N	Not Required
Appendices			
A-A-1 At the end of the final Plan, insert a new Appendix H containing the ICOMOS Charter.	None	N	Not Required
A-A-2 At the end of the final Plan, insert a new Appendix I (capital i) explaining the status of the policies and objectives contained in the SEDP 2010.	None	N	Not Required
Corrections			
Minor text corrections are to be made to five chapters and map corrections are to be made to Appendix A.	None	N	Not Required

Appendix 2

Appropriate Assessment Screening of Proposed Amendments to Volume 2 of the Draft Sligo County Development Plan 2017-2023

Appendix 2: Appropriate Assessment Screening of Proposed Amendments to Volume 2 of the Draft Plan

Note

The screening assessments outlined below relate to the **proposed amendments only**. Where it is indicated that there would be no risk of significant impact on Natura 2000 sites arising from additional or deleted text/change of policies/objectives/ changes to zoning maps and objectives maps, it means that the initial assessment of the relevant mini-plan remains unchanged, i.e. it is the same as indicated in the original Habitats Directive Assessment (September 2016).

Where there would be positive impacts as a result of proposed amendments, these will be cumulated with the original assessment in the final Appropriate Assessment, should the respective amendments be adopted.

Where there would be potential significant impacts on Natura 2000 sites arising from additional or deleted text/change of policies/objectives/ changes to zoning maps and objectives maps, the assessment of the proposed amendment indicates the existing Draft CDP policies that can ensure the avoidance of any likely significant impacts on Natura 2000 sites.

In addition, any proposed amendments where likely significant impacts remain on Natura 2000 sites after avoidance measures have been considered will be brought forward to Stage 2 Appropriate Assessment in this Natura Impact Report.

Text or description of proposed amendment to the narrative, policies, objectives, Zoning Maps or Objectives Maps in mini-plans	Potential Impact	Risk of Significant Impact (Y/N)	Specific Action Required: Avoidance/Policy Deletion or Amendment
Chapter 3. Ballinacarrow Mini-Plan			
A-MP-3-1 In Section 3.4 Village-centre mixed-use zone, modify Objective 3.4.E by deleting reference to minimum requirements for open space and density.	None	N	Not Required
Chapter 12. Curry Mini-Plan			
A-MP-12-1 Modify the Curry Zoning Map by changing the Mini-Plan Limit to exclude the site shown as A-MP-12-1 from the green belt. (Sub no 33)	Any development within the county could potentially have direct and/or indirect impacts on the Natura 2000 network through habitat fragmentation or habitat loss and disturbance of species.	Y	The following objectives/policies will ensure that impacts are avoided: SP-S-5 & SP-Z-6. P-NH-1, P-NH-3 & P-NH-4. P-DSNC -1 to -3. O-SNC -1. P-INV-1 & P-

Text or description of proposed amendment to the narrative, policies, objectives, Zoning Maps or Objectives Maps in mini-plans	Potential Impact	Risk of Significant Impact (Y/N)	Specific Action Required: Avoidance/Policy Deletion or Amendment
	Pollution of watercourses may occur during construction and through the discharge of treated wastewater.		INV-2.
Chapter 14. Easky Mini-Plan			
A-MP-14-1 Modify the Easky Zoning Map by changing the zoning of the site shown as A-MP-14-1 from 'community facilities' to ' residential uses '. Sub no 18	None	N	Not Required
A-MP-14-2 Modify the Easky Zoning Map by changing the zoning of the site shown as A-MP-14-2 from 'green belt' to ' residential uses '. (plot opposite former Garda barracks at western end of village)	Any development within the county could potentially have direct and/or indirect impacts on the Natura 2000 network through habitat fragmentation or habitat loss and disturbance of species. Pollution of watercourses may occur during construction and through the discharge of treated wastewater.	Y	The following objectives/policies will ensure that impacts are avoided: SP-S-5 & SP-Z-6. P-NH-1, P-NH-3 & P-NH-4. P-DSNC -1 to -3. O-SNC -1. P-INV-1 & P-INV-2.
A-MP-14-3 Modify the Easky Zoning Map by changing the zoning of the site shown as A-MP-14-3 from 'residential uses' to ' green belt '. (site of PL 10-92)	None	N	Not Required

Text or description of proposed amendment to the narrative, policies, objectives, Zoning Maps or Objectives Maps in mini-plans	Potential Impact	Risk of Significant Impact (Y/N)	Specific Action Required: Avoidance/Policy Deletion or Amendment
Chapter 16. Gorteen Mini-Plan			
A-MP-16-1 Modify the Gorteen Zoning Map by changing the zoning of the site shown as A-MP-16-1 from 'residential uses' to ' community facilities '. (sub no 87)	None	N	Not Required
Chapter 18. Riverstown Mini-Plan			
A-MP-18-1 Modify the Riverstown Objectives Map by removing the "VC-1" designation from the location along Main Street and placing it on the site shown as A-MP-18-1 .	Any development within the county could potentially have direct and/or indirect impacts on the Natura 2000 network through habitat fragmentation or habitat loss and disturbance of species. Pollution of watercourses may occur during construction and through the discharge of treated wastewater.	Y	The following objectives/policies will ensure that impacts are avoided: SP-S-5 & SP-Z-6. P-NH-1, P-NH-3 & P-NH-4. P-DSNC -1 to -3. O-SNC -1. P-INV-1 & P-INV-2.
Chapter 19. Tourlestraun Mini-Plan			
A-MP-19-1 In the Tourlestraun Mini-Plan text , insert the previously omitted Buildings of Note section (containing images, information and recommendations on two buildings)	None	N	Not Required
A-MP-19-2 Modify the Objectives Map for Tourlestraun by removing the colour designation from two of the four Buildings of Note (shown as A-MP-19-2).	None	N	Not Required

Text or description of proposed amendment to the narrative, policies, objectives, Zoning Maps or Objectives Maps in mini-plans	Potential Impact	Risk of Significant Impact (Y/N)	Specific Action Required: Avoidance/Policy Deletion or Amendment
Chapter 20. Ballincar Mini-Plan			
A-MP-20-1 In Section 20.1 Natural Heritage and open space delete Objective 20.1.B (p. 2 of the Draft Ballincar Mini-Plan) which promotes access to the sea shore.	Positive impacts anticipated from deletion of objective.	N	Not required
A-MP-20-2 Modify the Ballincar Zoning Map by changing the zoning of the site shown as A-MP-20-2 from 'green belt' to ' residential uses ' and modify the development limit to include this site. (Sub no 25)	Any development within the county could potentially have direct and/or indirect impacts on the Natura 2000 network through habitat fragmentation or habitat loss and disturbance of species. Pollution of watercourses may occur during construction and through the discharge of treated wastewater.	Y	The following objectives/policies will ensure that impacts are avoided: SP-S-5 & SP-Z-6. P-NH-1, P-NH-3 & P-NH-4. P-DSNC -1 to -3. O-SNC -1. P-INV-1 & P-INV-2.
A-MP-20-3 Modify the Ballincar Zoning Map by changing the zoning of the site shown as A-MP-20-3 from 'green belt' to ' commercial uses ' and modify the development limit to include this site. (Sub no 37)	Any development within the county could potentially have direct and/or indirect impacts on the Natura 2000 network through habitat fragmentation or habitat loss and disturbance of species. Pollution of watercourses may occur during construction and through the discharge of treated wastewater.	Y	The following objectives/policies will ensure that impacts are avoided: SP-S-5 & SP-Z-6. P-NH-1, P-NH-3 & P-NH-4. P-DSNC -1 to -3. O-SNC -1. P-INV-1 & P-INV-2.

Text or description of proposed amendment to the narrative, policies, objectives, Zoning Maps or Objectives Maps in mini-plans	Potential Impact	Risk of Significant Impact (Y/N)	Specific Action Required: Avoidance/Policy Deletion or Amendment
A-MP-20-4 Modify the Ballincar Objectives Map by deleting the entire length of the proposed 'river walks, pedestrian and cycle links' route.	Positive impacts anticipated from amending the objectives map.	N	Not required
Chapter 21. Ballintogher Mini-Plan			
A-MP-21-1 In Section 21.6 Business and enterprise (p. 3 of the Draft Ballintogher Mini-Plan), delete Objective 21.6.B (which refers to the site marked 'ENT-1')	None	N	Not Required
A-MP-21-2 Modify the Ballintogher Zoning Map by changing the zoning of the site shown as A-MP-21-2 from 'business & enterprise' to ' mixed uses '. (Sub. No. 96)	None	N	Not Required
A-MP-21-3 Modify the Ballintogher Objectives Map by deleting the designation ' ENT-1 '.	None	N	Not Required
Chapter 23. Ballysadare Mini-Plan			
A-MP-23-1 In subsection Community facilities (p.1 of the Draft Ballysadare Mini-Plan), delete reference to the existence of a health centre.	None	N	Not Required
A-MP-23-2 In Section 23.7 Industrial Development , add new objective 23.7.B to facilitate, subject to the detailed assessment of any planning application, the continued use of the existing block-making facility in Harrington's quarry in its current location.	Any development within the county could potentially have direct and/or indirect impacts on the Natura 2000 network through habitat fragmentation or habitat loss and disturbance of species. Pollution of watercourses may occur during construction and through the	Y	The following objectives/policies will ensure that impacts are avoided: SP-S-5 & SP-Z-6. P-NH-1, P-NH-3 & P-NH-4. P-DSNC -1 to -3. O-SNC -1. P-INV-1 & P-INV-2.

Text or description of proposed amendment to the narrative, policies, objectives, Zoning Maps or Objectives Maps in mini-plans	Potential Impact	Risk of Significant Impact (Y/N)	Specific Action Required: Avoidance/Policy Deletion or Amendment
	discharge of treated wastewater.		
A-MP-23-3 Modify the Ballysadare Zoning Map by changing the zoning of the sites shown as A-MP-23-3 from 'community facilities' to 'open space'. Sub no.116a and 116c	None	N	Not Required
A-MP-23-4 Modify the Ballysadare Zoning Map by changing the zoning of the site shown as A-MP-23-4 from 'open space' to 'mixed uses'. Sub no.104 and 105	<p>Significant negative impacts would be expected to result from the proposed amendment arising from direct and indirect impacts on habitats (Annex 1) and species (Annex 2) listed in the Habitats Directive. Including;</p> <ul style="list-style-type: none"> ▪ Habitat loss and fragmentation ▪ Decrease in water quantity and quality ▪ Changes in local hydrology ▪ Increased pollution/erosion ▪ Disturbance to habitats or species ▪ Direct or indirect damage to the populations for which the Natura 2000 site is 	Y	Stage 2 Appropriate Assessment required for the proposed amendment.

Text or description of proposed amendment to the narrative, policies, objectives, Zoning Maps or Objectives Maps in mini-plans	Potential Impact	Risk of Significant Impact (Y/N)	Specific Action Required: Avoidance/Policy Deletion or Amendment
	designated.		
A-MP-23-5 Modify the Ballysadare Zoning Map by changing the zoning of the site shown as A-MP-23-5 from 'green belt' to ' residential uses '. (sub.no 106)	Any development within the county could potentially have direct and/or indirect impacts on the Natura 2000 network through habitat fragmentation or habitat loss and disturbance of species. Pollution of watercourses may occur during construction and through the discharge of treated wastewater.	Y	The following objectives/policies will ensure that impacts are avoided: SP-S-5 & SP-Z-6. P-NH-1, P-NH-3 & P-NH-4. P-DSNC -1 to -3. O-SNC -1. P-INV-1 & P-INV-2.
A-MP-23-6 Modify the Ballysadare Zoning Map by changing the zoning of the site shown as A-MP-23-6 from 'residential uses' to ' open space '. (sub no.106 – see map with resolution)	None	N	Not Required
Chapter 24. Carney Mini-Plan			
A-MP-24-1 Modify the Carney Zoning Map by changing the zoning of the sites shown as A-MP-24-1 from 'community facilities' to ' residential uses '. Sub no 94	Any development within the county could potentially have direct and/or indirect impacts on the Natura 2000 network through habitat fragmentation or habitat loss and disturbance of species. Pollution of watercourses may occur during	Y	The following objectives/policies will ensure that impacts are avoided: SP-S-5 & SP-Z-6. P-NH-1, P-NH-3 & P-NH-4. P-DSNC -1 to -3. O-SNC -1. P-INV-1 & P-INV-2.

Text or description of proposed amendment to the narrative, policies, objectives, Zoning Maps or Objectives Maps in mini-plans	Potential Impact	Risk of Significant Impact (Y/N)	Specific Action Required: Avoidance/Policy Deletion or Amendment
	construction and through the discharge of treated wastewater.		
Chapter 25. Cliffony Mini-Plan			
A-MP-24-1 Modify the Cliffoney Zoning Map by changing the zoning of the site shown as A-MP-25-1 from 'green belt' to ' residential uses ' and modify the 'development limit' to include the sites. Sub no 20	Any development within the county could potentially have direct and/or indirect impacts on the Natura 2000 network through habitat fragmentation or habitat loss and disturbance of species. Pollution of watercourses may occur during construction and through the discharge of treated wastewater.	Y	The following objectives/policies will ensure that impacts are avoided: SP-S-5 & SP-Z-6. P-NH-1, P-NH-3 & P-NH-4. P-DSNC -1 to -3. O-SNC -1. P-INV-1 & P-INV-2.
Chapter 26. Collooney Mini-Plan			
A-MP-26-1 Modify subsection Community facilities (p. 1 of the Draft Collooney Mini-Plan) to state that there are three primary schools and three churches.	None	N	Not Required
A-MP-26-2 In Section 26.8 Wastewater treatment (p. 6 of the Draft Collooney Mini-Plan), delete Objective 26.8.A (relating to lands for expanding the treatment plant)	None	N	Not Required

Text or description of proposed amendment to the narrative, policies, objectives, Zoning Maps or Objectives Maps in mini-plans	Potential Impact	Risk of Significant Impact (Y/N)	Specific Action Required: Avoidance/Policy Deletion or Amendment
A-MP-26-3 Modify the Collooney Zoning Map by changing the zoning of the site shown as A-MP-26-3 from 'public utility' to ' business and enterprise '. Sub no 45b	None	N	Not Required
A-MP-26-4 Modify the Collooney Zoning Map by changing the zoning of the site shown as A-MP-26-4 from 'commercial uses' to ' sports and playing fields '. Sub no 69c	None	N	Not Required
Chapter 27. Drumcliff Mini-Plan			
A-MP-27-1 In Section 27.2 Built Heritage (p. 2 of the Draft Drumcliff Mini-Plan), add Objective 27.2.C as follows: 27.2.C Prepare and implement a Conservation Plan for the monastic site at Drumcliff in partnership with relevant stakeholders and the local community, subject to the availability of resources.	None	N	Not Required
A-MP-27-2 In Section 27.3 Circulation and Parking (p. 2-3 of the Draft Drumcliff Mini-Plan), modify Objective 27.3.C by inserting references to cycling.	None	N	Not Required
Chapter 28. Grange Mini-Plan			
A-MP-28-1 Modify the Grange Zoning Map by changing the zoning of the site shown as A-MP-28-1 from 'green belt' to ' tourism-related uses '. Sub no 53 and 71	Any development within the county could potentially have direct and/or indirect impacts on the Natura 2000 network through habitat fragmentation or habitat loss and disturbance of species. Pollution of watercourses may occur during	Y	The following objectives/policies will ensure that impacts are avoided: SP-S-5 & SP-Z-6. P-NH-1, P-NH-3 & P-NH-4. P-DSNC -1 to -3. O-SNC -1. P-INV-1 & P-INV-2.

Text or description of proposed amendment to the narrative, policies, objectives, Zoning Maps or Objectives Maps in mini-plans	Potential Impact	Risk of Significant Impact (Y/N)	Specific Action Required: Avoidance/Policy Deletion or Amendment
	construction and through the discharge of treated wastewater.		
Chapter 29. Mullaghmore Mini-Plan			
A-MP-29-1 Modify the Buildings of Note section (p. 6 of the Draft Mullaghmore Mini-Plan) by adding the previously omitted description and recommendation for BON-5 .	None	N	Not Required
A-MP-29-2 Modify the Mullaghmore Objectives Map by indicating the lands shown as A-MP-29-2 subject to the designation "ENT-1".	Any development within the county could potentially have direct and/or indirect impacts on the Natura 2000 network through habitat fragmentation or habitat loss and disturbance of species. Pollution of watercourses may occur during construction and through the discharge of treated wastewater.	Y	The following objectives/policies will ensure that impacts are avoided: SP-S-5 & SP-Z-6. P-NH-1, P-NH-3 & P-NH-4. P-DSNC -1 to -3. O-SNC -1. P-INV-1 & P-INV-2.
Chapter 31. Rathcormac Mini-Plan			
A-MP-31-1 In subsection Infrastructure (p. 2 of the Draft Rathcormac Mini-Plan), include commitment to facilitate a wastewater treatment plant in Rathcormac.	None	N	Not Required

Text or description of proposed amendment to the narrative, policies, objectives, Zoning Maps or Objectives Maps in mini-plans	Potential Impact	Risk of Significant Impact (Y/N)	Specific Action Required: Avoidance/Policy Deletion or Amendment
Chapter 32. Rosses Point Mini-Plan			
A-MP-32-1 In subsection Village profile (p.1 of the Draft Rosses Point Mini-Plan), include references to the maritime tradition of Rosses Point.	None	N	Not Required
A-MP-32-2 In Section 32.3.Circulation and parking (p. 3 of Draft Rosses Point Mini-Plan), modify Objective 32.3.D by adding reference to traffic calming measures and facilities for pedestrians and cyclists.	None	N	Not Required
A-MP-32-3 In Section 32.5 Community facilities (p.4 of Draft Rosses Point Mini-Plan), modify Section 32.5.C by replacing CF-2 with CF-1 .	None	N	Not Required
A-MP-32-4 Modify the Rosses Point Zoning Map by changing the zoning of the site shown as A-MP-32-4 from 'open space' to 'green belt'. The development limit should be amended to exclude this site. Sub no 58	Positive impacts anticipated from amended text.	N	Not required
Chapter 33. Strandhill Mini-Plan			
A-MP-33-1 In subsection Community facilities (p. 1-2 of Draft Strandhill Mini-Plan), add a reference to Strandhill Golf Club.	None	N	Not Required
A-MP-33-2 In Section 33.3 Built Heritage (p. 6 of Draft Strandhill Mini-Plan), add Objective 33.3.D as follows: 33.3.D Prepare a conservation report for Killaspugbrone Medieval Church and Graveyard, in partnership with the community, to inform future conservation works to the Church and graveyard, as resources allow.	None	N	Not Required

Text or description of proposed amendment to the narrative, policies, objectives, Zoning Maps or Objectives Maps in mini-plans	Potential Impact	Risk of Significant Impact (Y/N)	Specific Action Required: Avoidance/Policy Deletion or Amendment
<p>A-MP-33-3 In Section 33.6 Community facilities (p. 8-9 of Draft Strandhill Mini-Plan), add Objective 33.6.D as follows:</p> <p>33.6.D Support the improvement and further development of Strandhill Golf Course subject to compliance with the requirements of the EU Habitats Directive.</p>	<p>Any development within the county could potentially have direct and/or indirect impacts on the Natura 2000 network through habitat fragmentation or habitat loss and disturbance of species. Pollution of watercourses may occur during construction and through the discharge of treated wastewater.</p> <p>The expansion of the golf course has the potential to impact negatively on the integrity of the Ballysadare Bay SAC/SPA and on the coastal landscape. Any proposal for expansion must comply with the nature conservation policies set out in Section 7.1 of the CDP (Vol. 1) and with the landscape protection policies set out in Section 7.4 of the CDP (Vol. 1).</p>	Y	<p>The following objectives/policies will ensure that impacts are avoided: SP-S-5 & SP-Z-6. P-NH-1, P-NH-3 & P-NH-4. P-DSNC -1 to -3. O-SNC -1. P-INV-1 & P-INV-2.</p>
<p>A-MP-33-4 In the Buildings of Note section (p. 10-12 of Draft Strandhill Mini-Plan), insert an additional Building of Note – BoN no. 9 (including photo, assessment and recommendations) and insert the corresponding indication on the Objectives Map.</p>	None	N	Not Required

Text or description of proposed amendment to the narrative, policies, objectives, Zoning Maps or Objectives Maps in mini-plans	Potential Impact	Risk of Significant Impact (Y/N)	Specific Action Required: Avoidance/Policy Deletion or Amendment
A-MP-33-5 Modify the Strandhill Zoning Map by changing the zoning of the site shown as A-MP-33-5 from 'open space' to 'residential uses'. Sub no 67	Any development within the county could potentially have direct and/or indirect impacts on the Natura 2000 network through habitat fragmentation or habitat loss and disturbance of species. Pollution of watercourses may occur during construction and through the discharge of treated wastewater.	Y	The following objectives/policies will ensure that impacts are avoided: SP-S-5 & SP-Z-6. P-NH-1, P-NH-3 & P-NH-4. P-DSNC -1 to -3. O-SNC -1. P-INV-1 & P-INV-2.
A-MP-33-6 Modify the Strandhill Objectives Map by adjusting the site marked ' OS-1 ' to reflect the reduced open space zoning at this location. Sub no 67	None	N	Not Required
A-MP-33-7 Modify the Strandhill Objectives Map by adding an indicative pedestrian/cycle link between the upper car park to the seafront and proposed Maritime Centre site.	None	N	Not Required
Corrections			
<p>The following corrections are to be made:</p> <ul style="list-style-type: none"> - insertion of correct reference numbers of Proposed Protected Structures in eight mini-plans; - insertion of appropriately-scaled maps showing the full extent of proposed walkways, scenic routes and the location of protected views within the green belts in 27 mini-plans; - insertion of a buffer zone around the treatment plant in one mini-plan (Bellaghy). 	None	N	Not Required

